

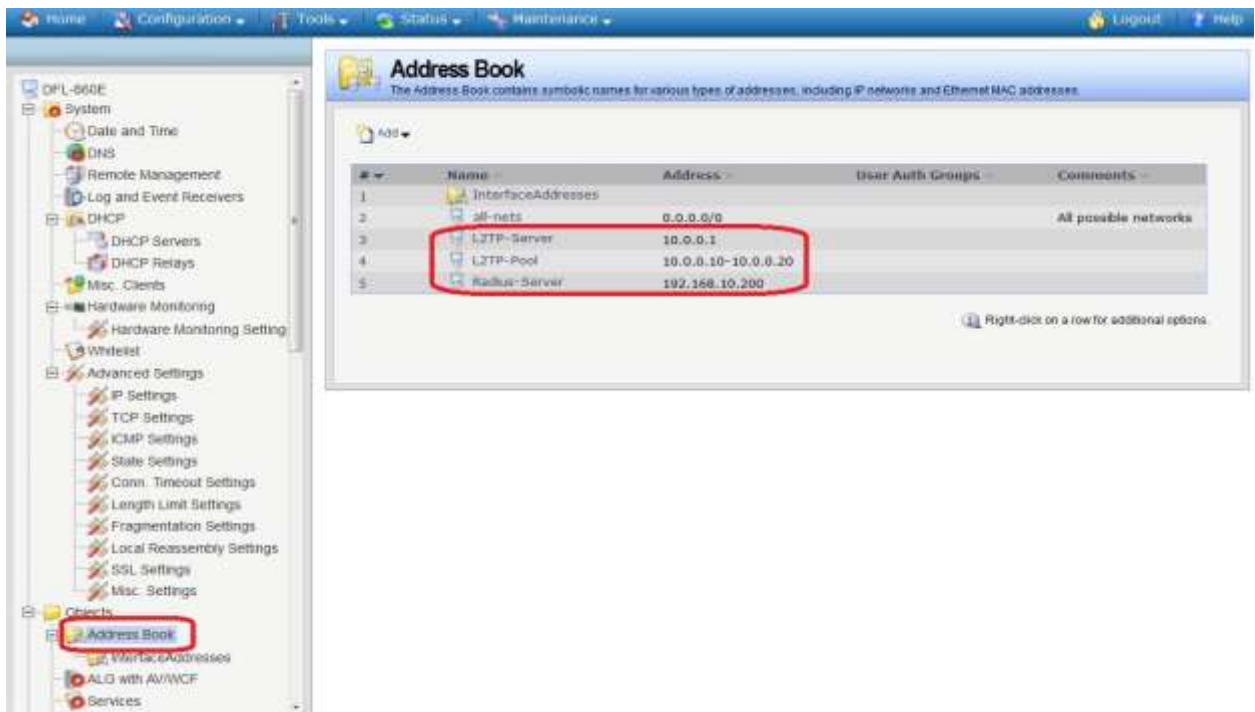
## How to setup L2TP/IPsec with RADIUS Server (Windows 2008)



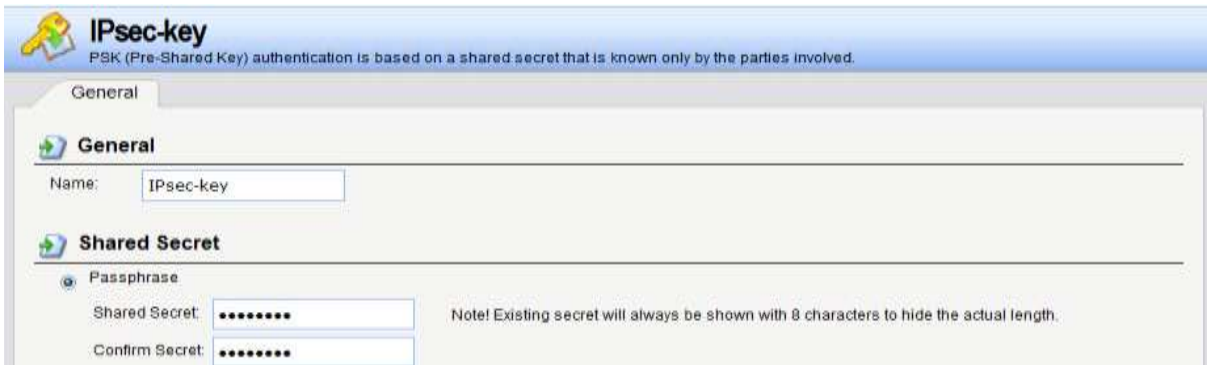
**Introduction:** The situation in my topology is when the VPN client try to build the tunnel with the DFL, the DFL will authenticate the client by RADIUS server which is located in it's LAN.

### Step:

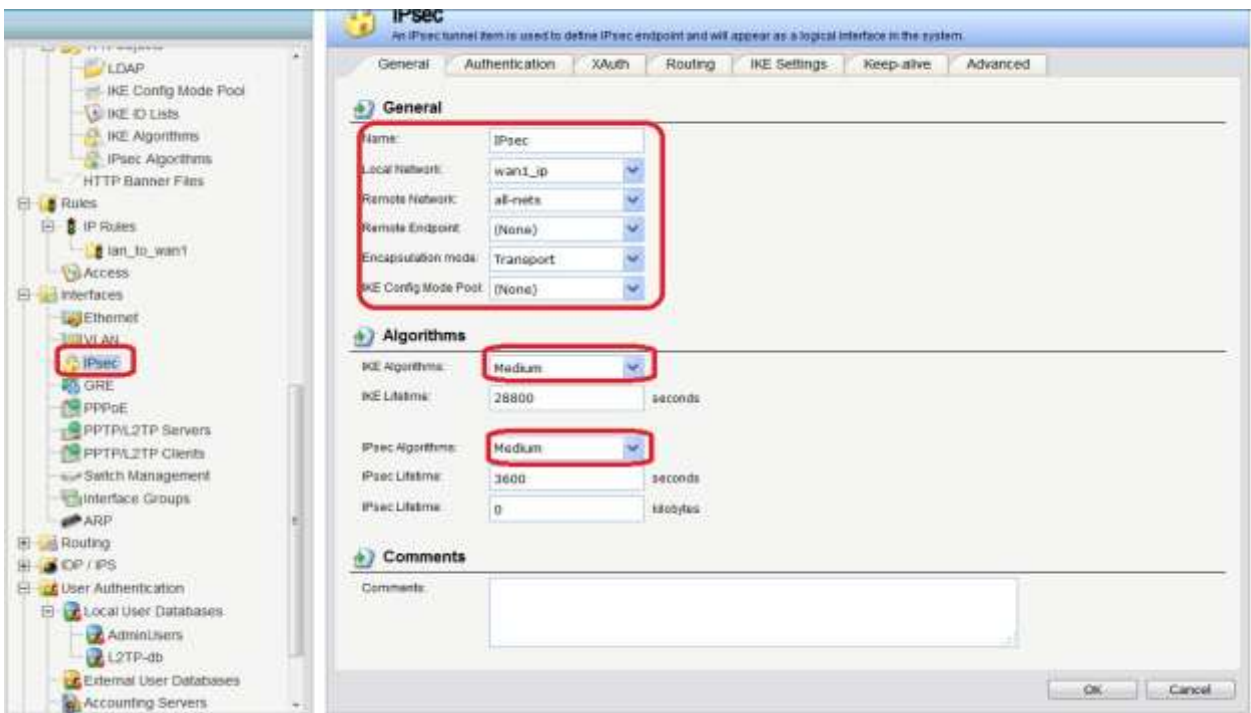
1. Setup L2TP's server, pool, and RADIUS server in DFL's Address Book.

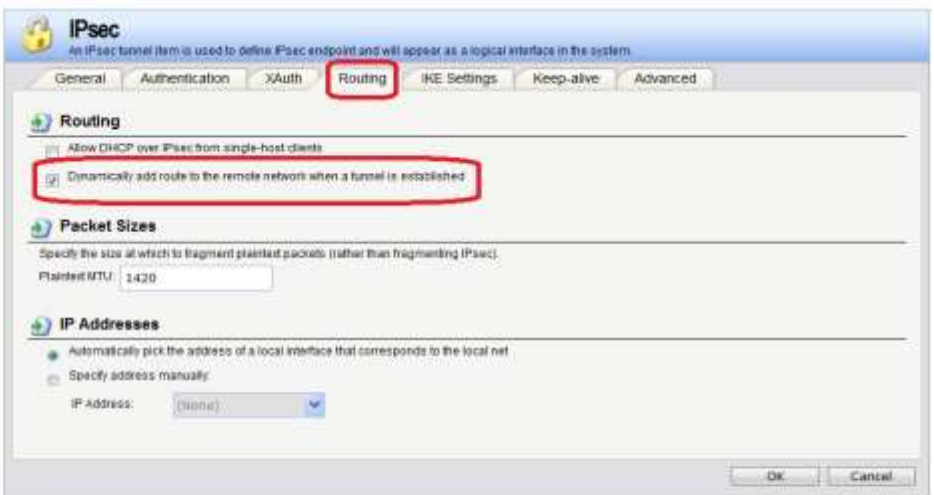
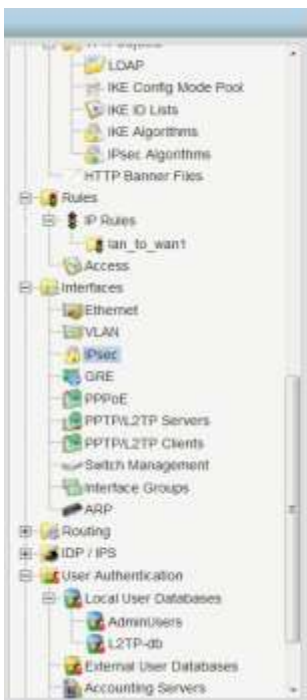
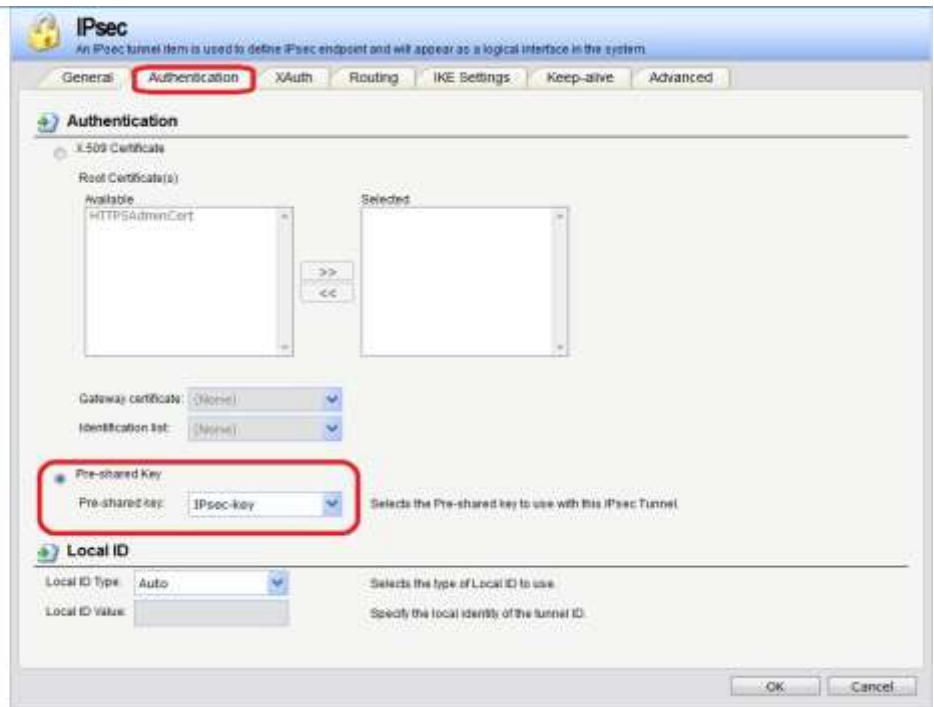


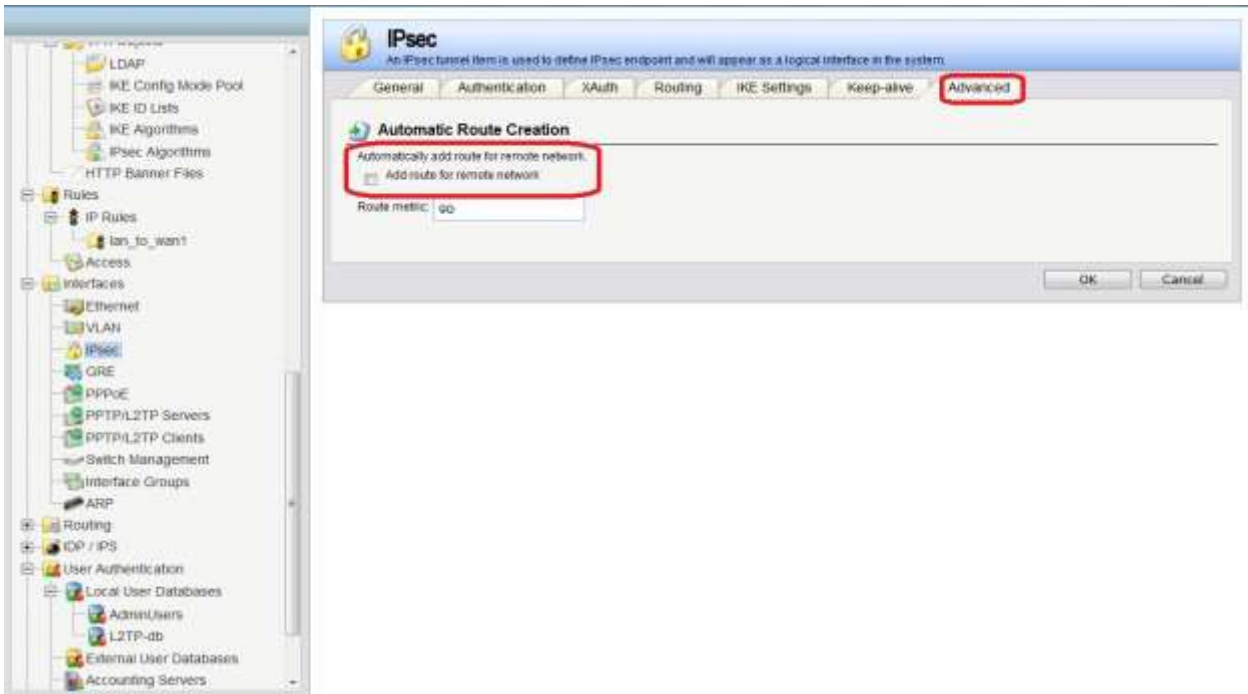
2. Setup IPsec's pre-shared key in Authentication Object.



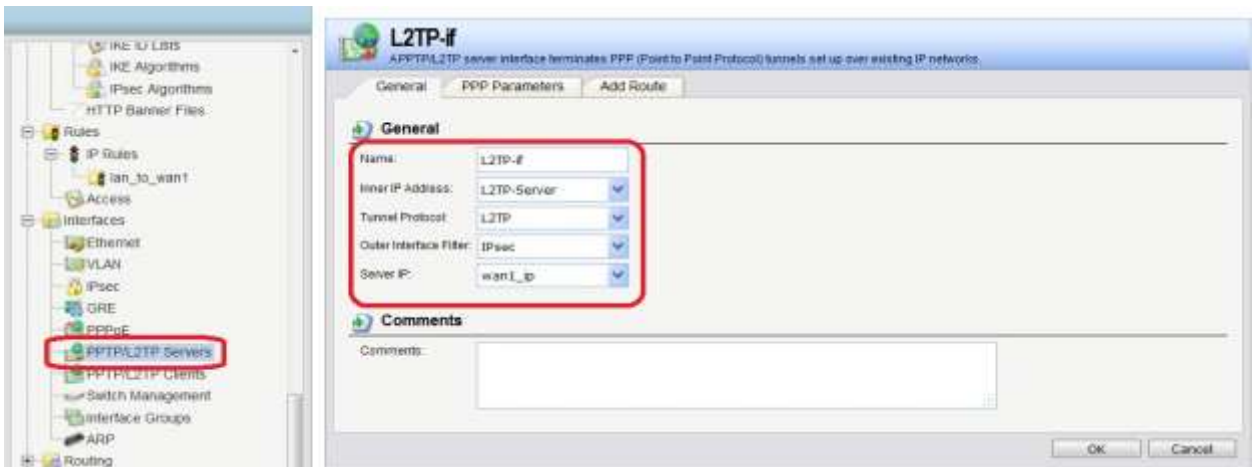
3. Setup IPsec interface, with following information. **NOTE: Local Network: wan1\_ip**

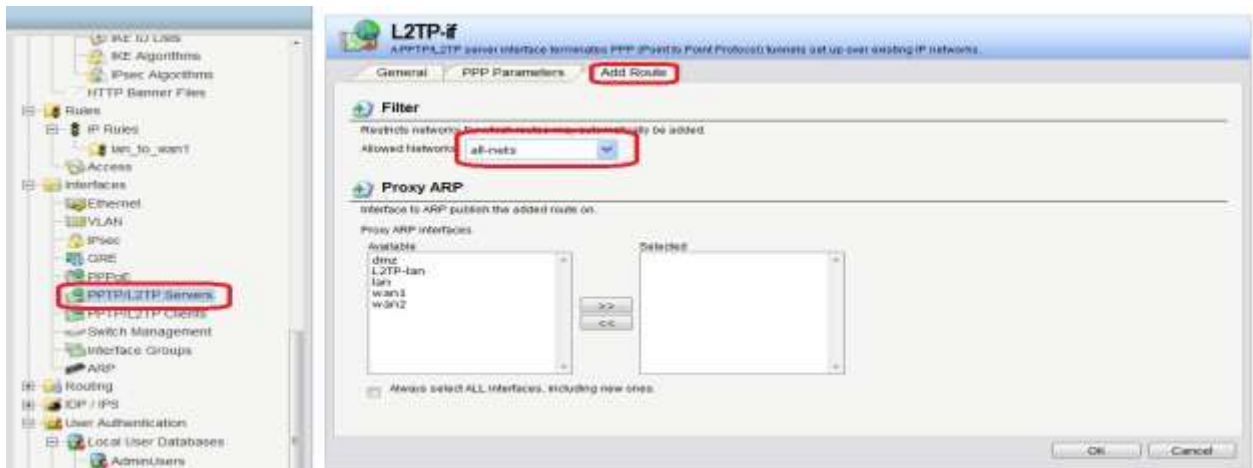
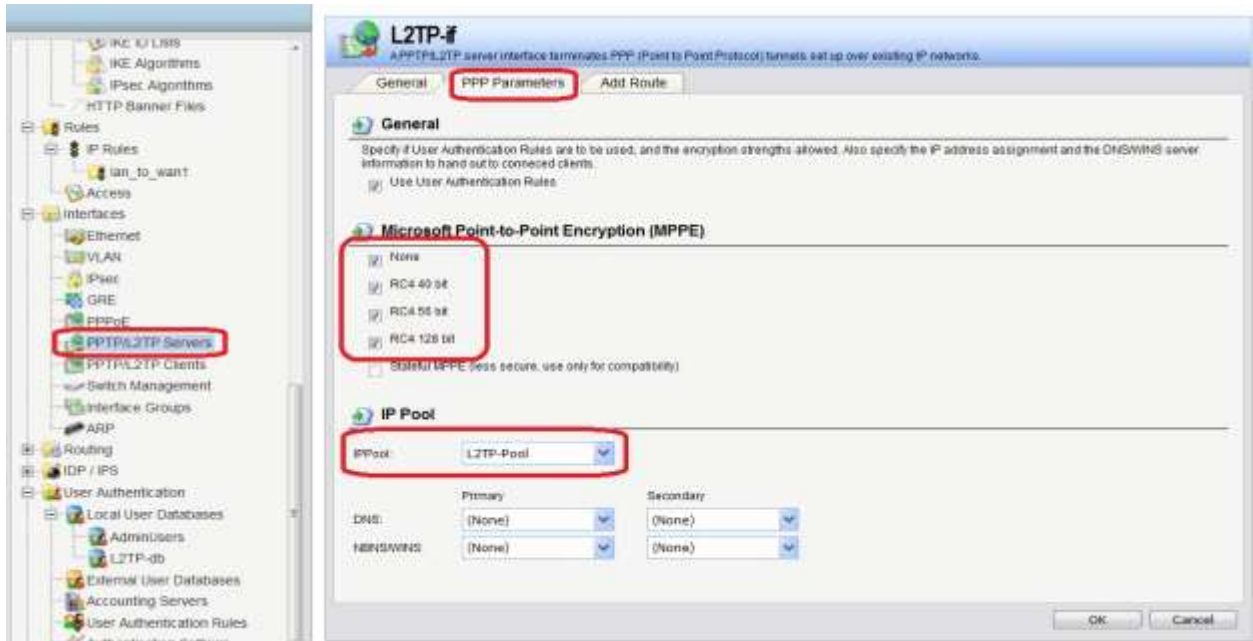




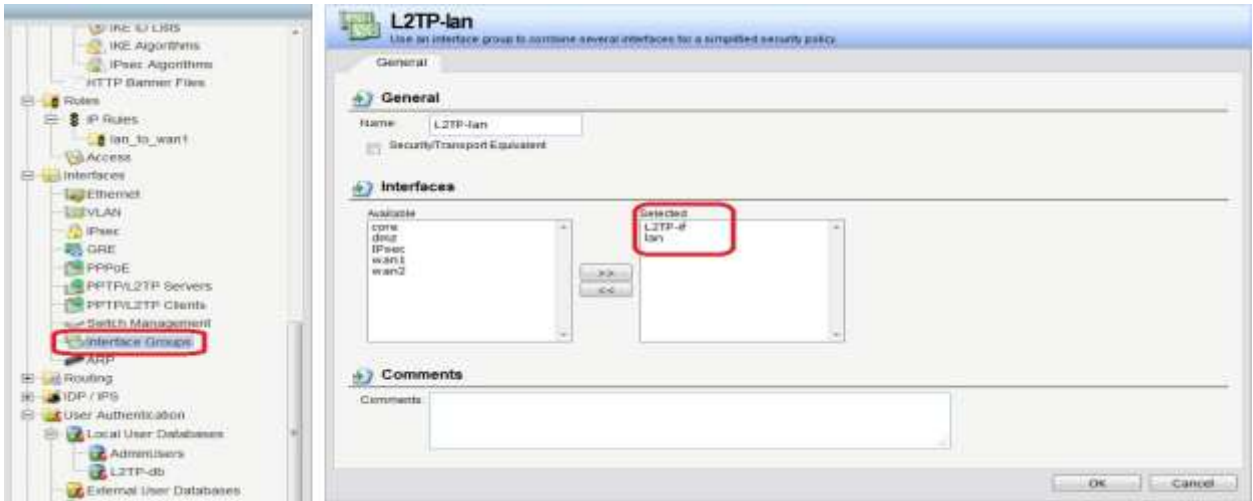


4. Setup L2TP's interface. **NOTE: Outer interface filter: IPsec interface**

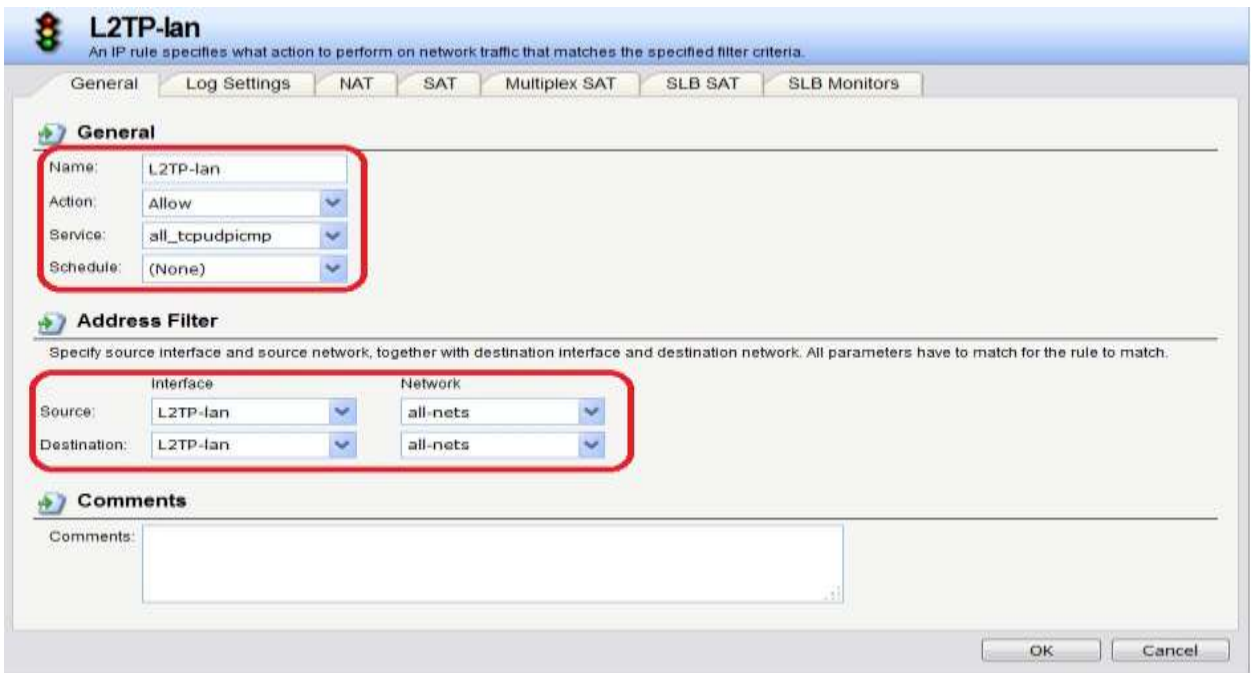
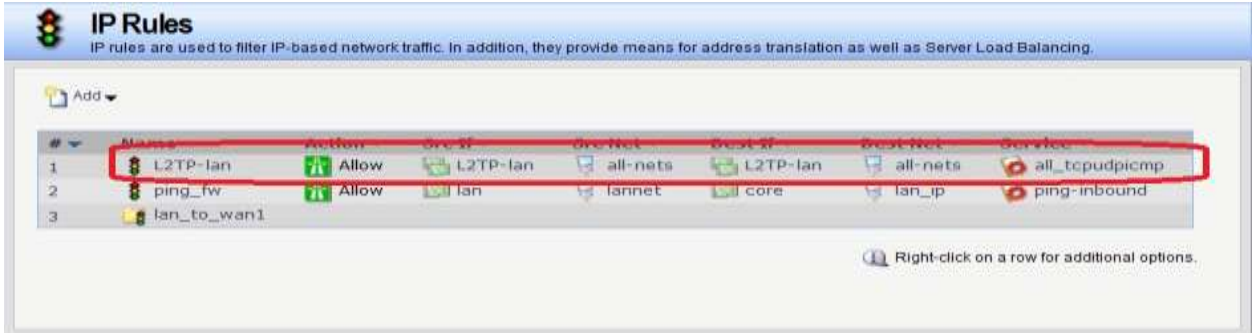




5. Group the interfaces, L2TP and lan, for ip rule.



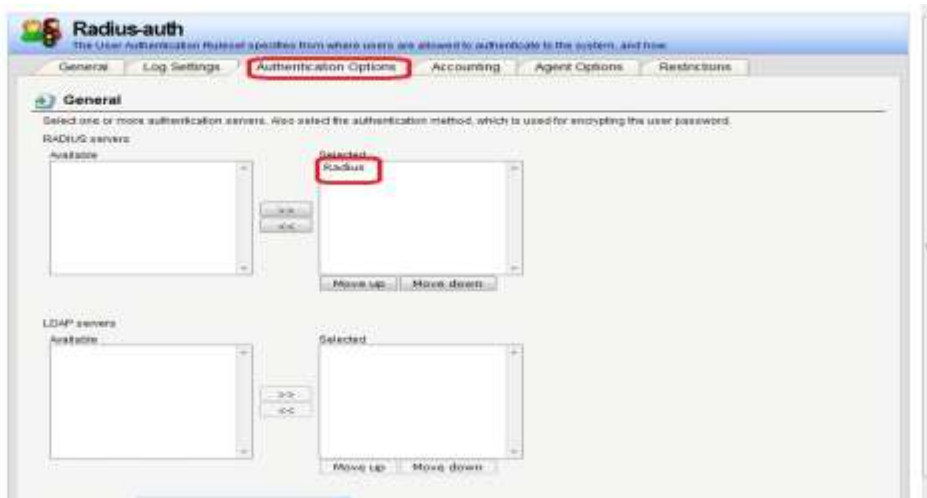
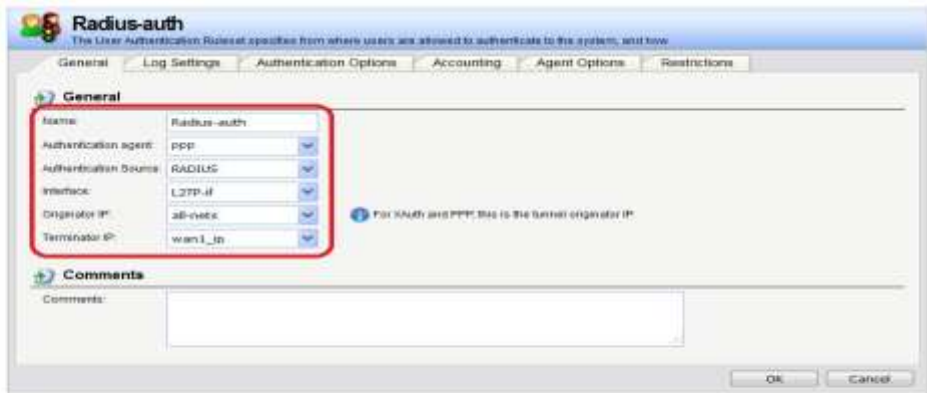
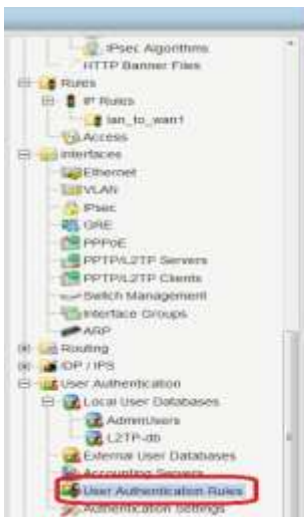
## 6. Setup ip rule.

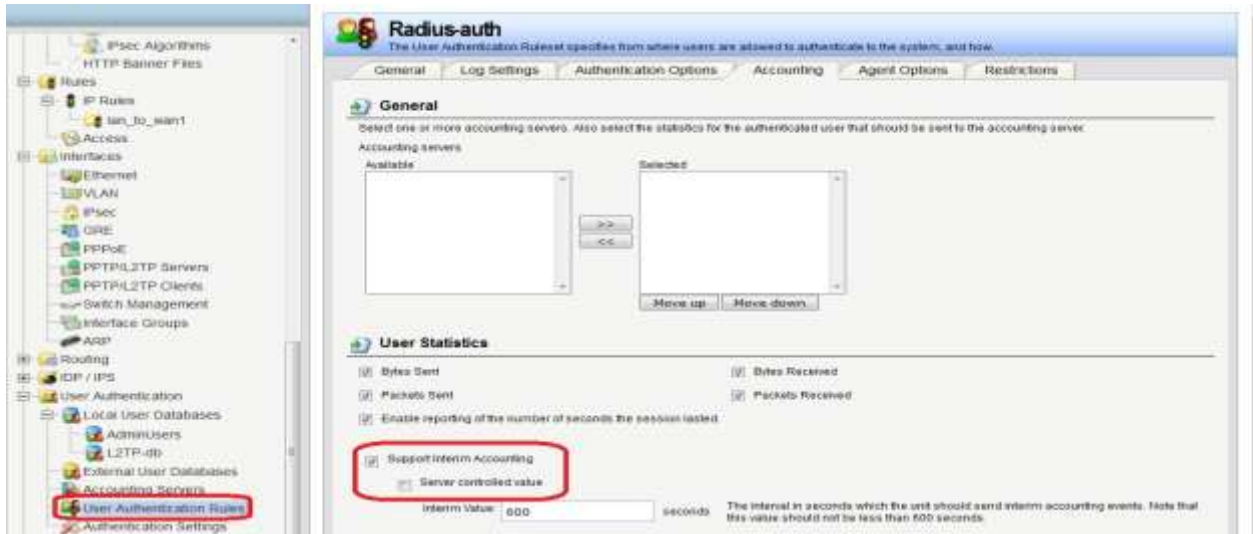


## 7. Setting External Authentication for RADIUS

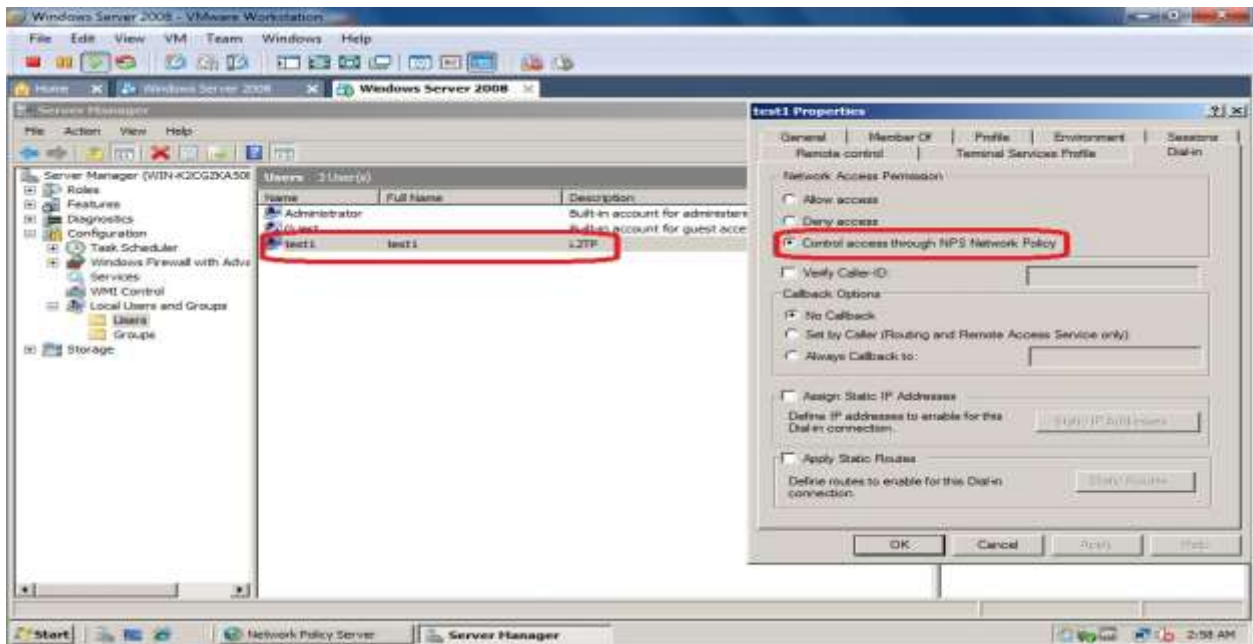


## 8. Setting Authentication Rule. (Finish the DFL's setting)



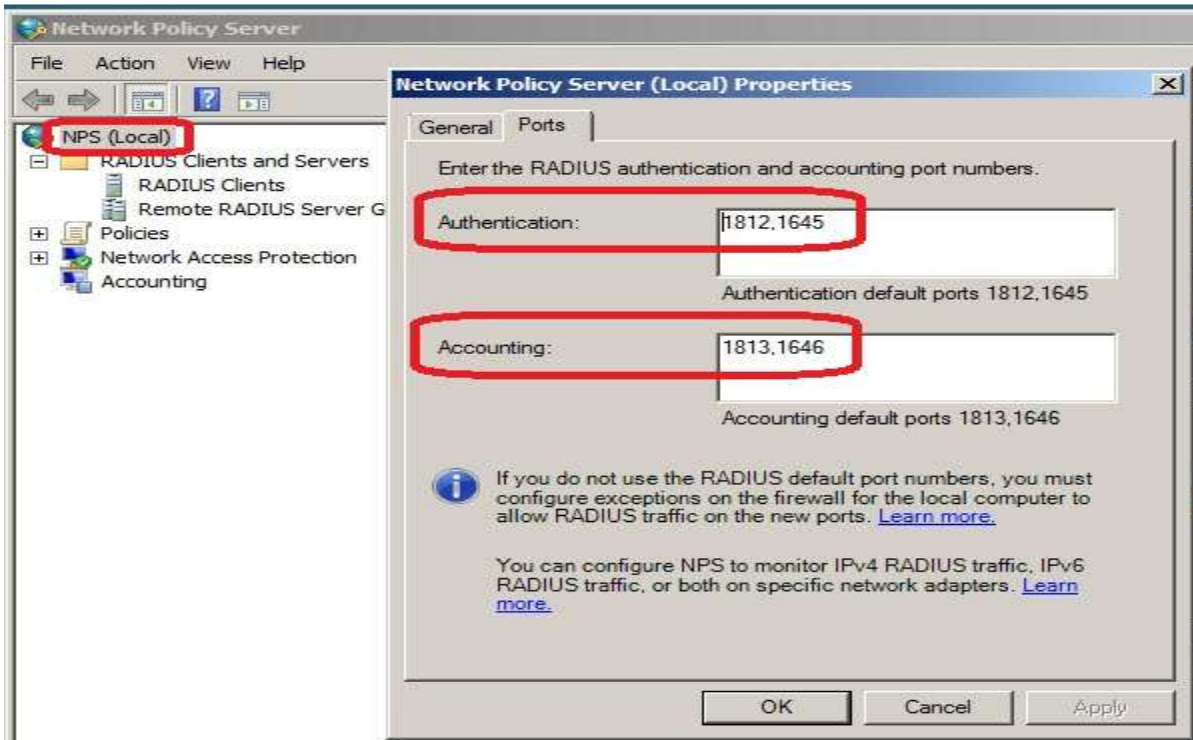


9. Create a account for RADIUS in windows 2008.

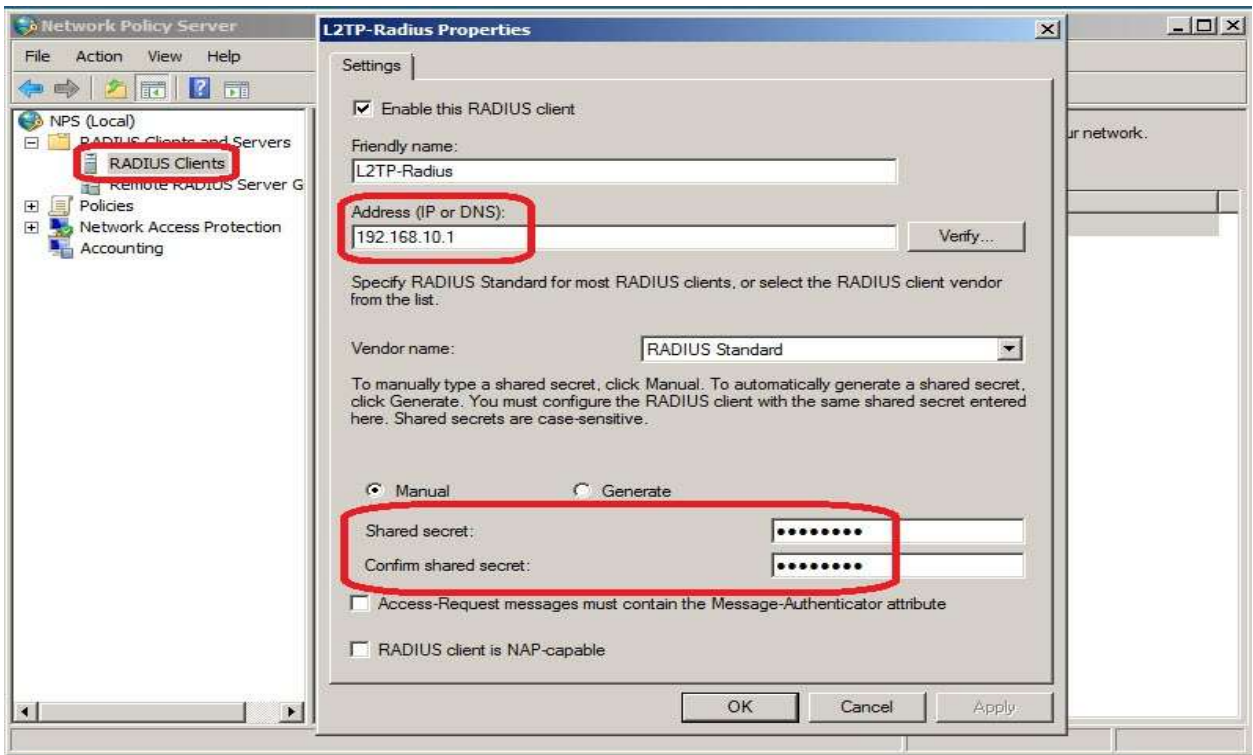




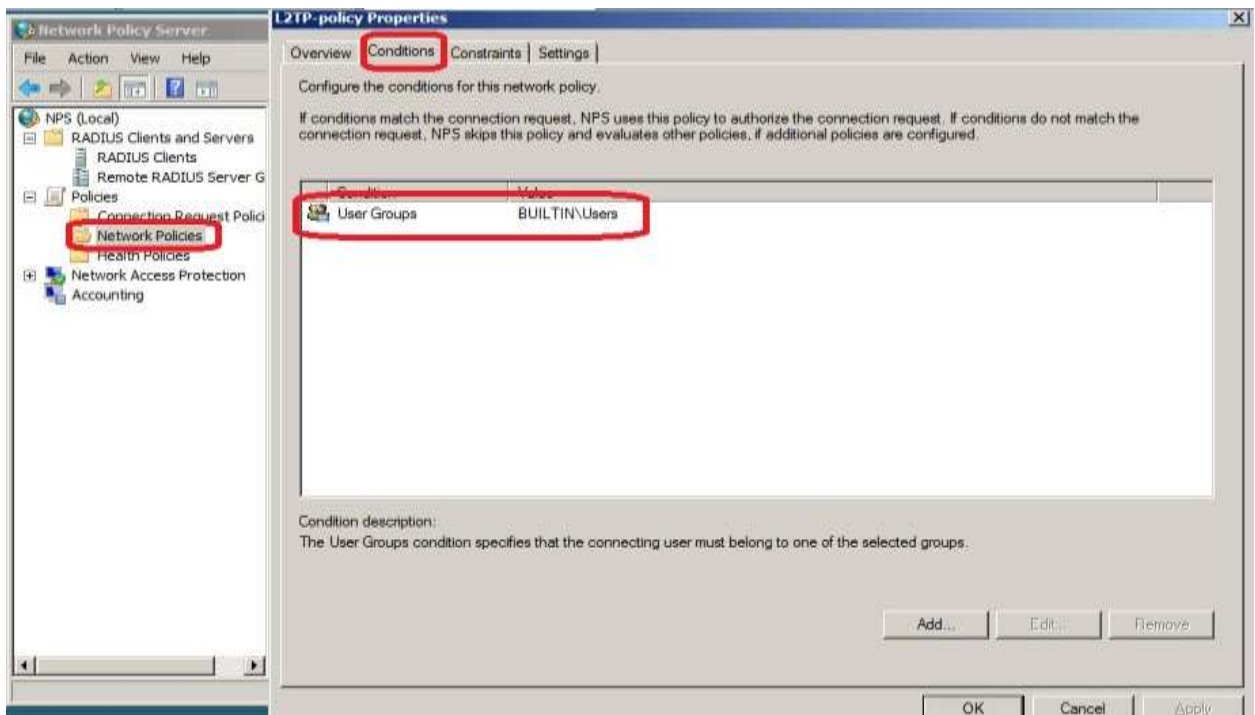
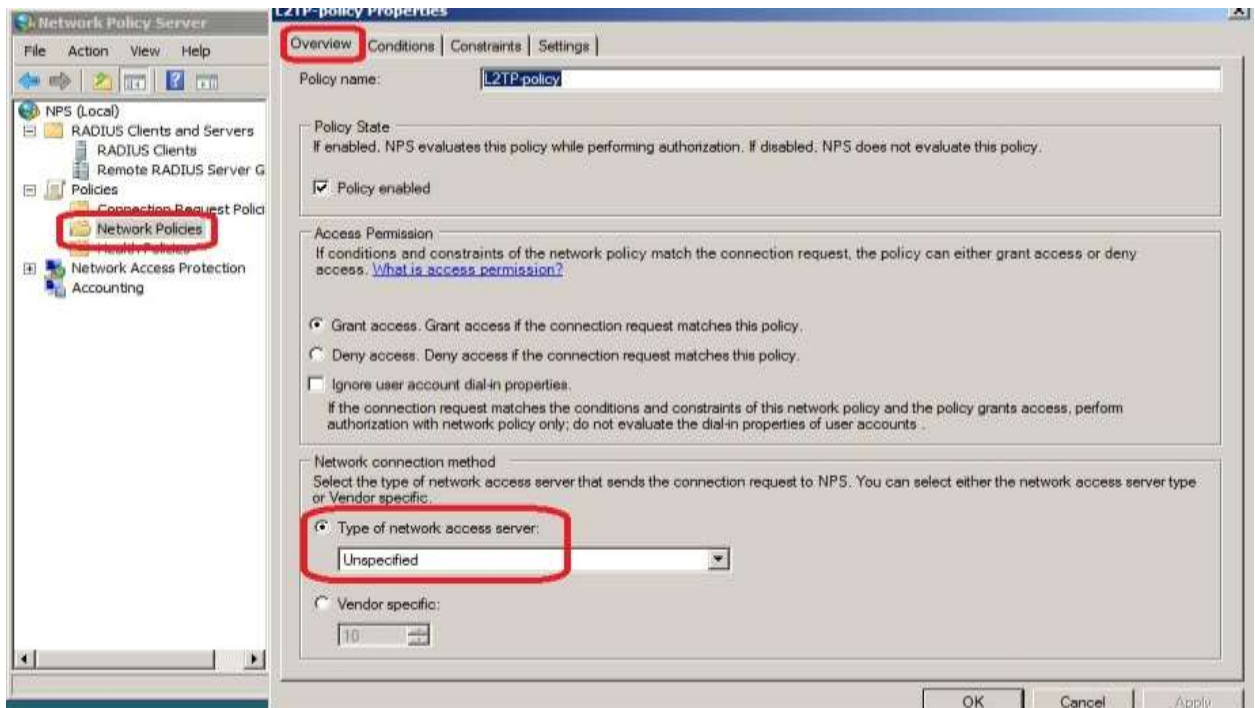
10. Check the RADIUS port in NPS, first.



11. Setup the NPS Client.



## 12. Setup RADIUS policy.



End of Document.