

USER MANUAL

DSL-2500U

VERSION 2.10



Table of Contents

TABLE OF CONTENTS	2	DIAGNOSTICS	49
PACKAGE CONTENTS.....	3	MANAGEMENT	50
SYSTEM REQUIREMENTS.....	3	SETTINGS	50
FEATURES	4	SYSTEM LOG.....	51
HARDWARE OVERVIEW	5	SNMP AGENT.....	52
<i>Connections</i>	5	INTERNET TIME.....	52
<i>LEDs</i>	6	ACCESS CONTROL.....	53
INSTALLATION	7	UPDATE SOFTWARE.....	54
BEFORE YOU BEGIN.....	7	SAVE/REBOOT	55
INSTALLATION NOTES	8	TROUBLESHOOTING	56
DEVICE INSTALLATION.....	14	NETWORKING BASICS	59
<i>Power on Router</i>	14	CHECK YOUR IP ADDRESS	59
<i>Factory Reset Button</i>	15	STATICALLY ASSIGN AN IP ADDRESS	60
<i>Network Connections</i>	15	TECHNICAL SPECIFICATIONS	61
CONFIGURATION	17		
WEB-BASED CONFIGURATION UTILITY	17		
QUICK SETUP	18		
DEVICE INFO	36		
SUMMARY	37		
WAN.....	37		
STATISTICS	38		
ROUTE	40		
ARP.....	40		
DHCP	40		
ADVANCED SETUP	41		
WAN.....	41		
LAN	43		
QUALITY OF SERVICE	44		
<i>Queue Config</i>	44		
<i>QoS Classification</i>	45		
ROUTING.....	46		
DSL.....	47		
PPTP.....	49		

Package Contents

- DSL-2500U ADSL Router
- Power Adapter
- CD-ROM with User Manual
- One twisted-pair telephone cable used for ADSL connection
- One straight-through Ethernet cable
- One Quick Installation Guide

Note: Using a power supply with a different voltage rating than the one included with the DSL-2500U will cause damage and void the warranty for this product.



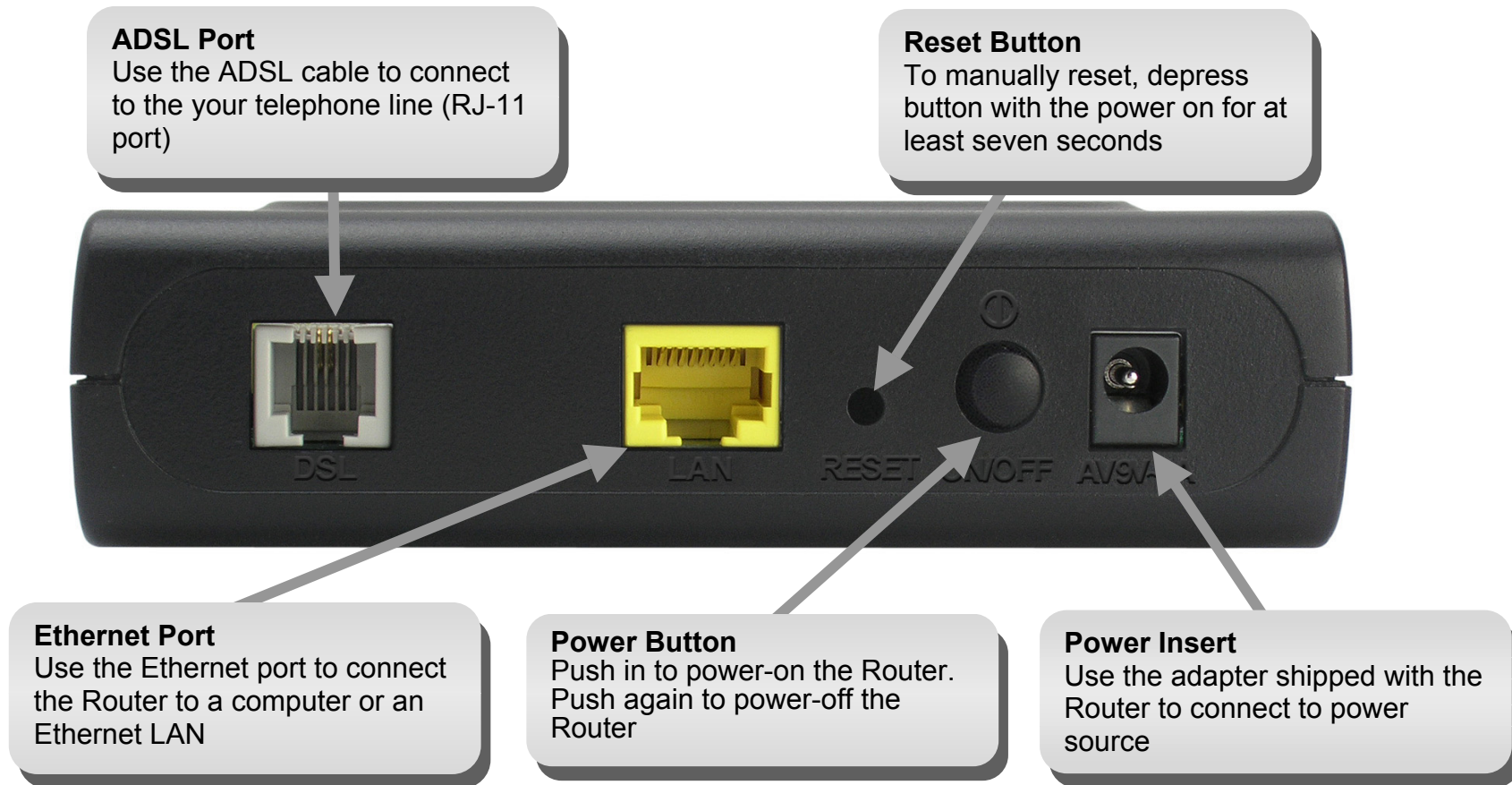
System Requirements

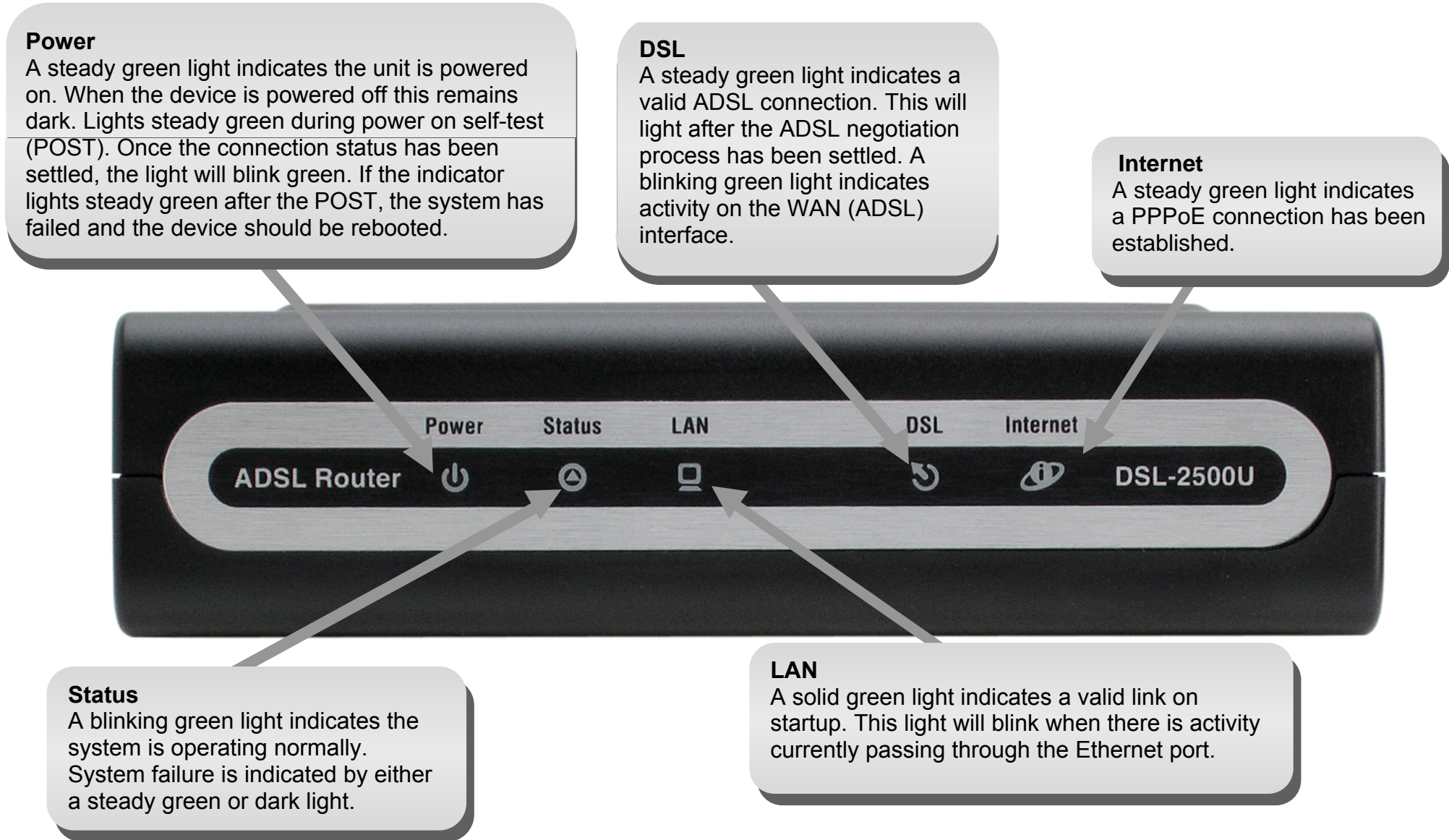
- ADSL Internet service
- Computer with:
 - 200MHz Processor
 - 64MB Memory
 - CD-ROM Drive
 - Ethernet Adapter with TCP/IP Protocol Installed
 - Internet Explorer v6 or later, FireFox v1.5
 - Computer with Windows 2000, Windows XP, or Windows Vista
- D-Link Click'n Connect Utility

Features

- **PPP (Point-to-Point Protocol) Security** – The DSL-2500U ADSL Router supports PAP (Password Authentication Protocol) and CHAP (Challenge Handshake Authentication Protocol) for PPP connections. The Router also supports MSCHAP.
- **DHCP Support** – Dynamic Host Configuration Protocol automatically and dynamically assigns all LAN IP settings to each host on your network. This eliminates the need to reconfigure every host whenever changes in network topology occur.
- **Network Address Translation (NAT)** – For small office environments, the DSL-2500U allows multiple users on the LAN to access the Internet concurrently through a single Internet account. This provides Internet access to everyone in the office for the price of a single user. NAT improves network security in effect by hiding the private network behind one global and visible IP address. NAT address mapping can also be used to link two IP domains via a LAN-to-LAN connection.
- **TCP/IP (Transfer Control Protocol/Internet Protocol)** – The DSL-2500U supports TCP/IP protocol, the language used for the Internet. It is compatible with access servers manufactured by major vendors.
- **RIP-1/RIP-2** – The DSL-2500U supports both RIP-1 and RIP-2 exchanges with other routers. Using both versions lets the Router to communicate with all RIP enabled devices.
- **Static Routing** – This allows you to select a data path to a particular network destination that will remain in the routing table and never “age out”. If you wish to define a specific route that will always be used for data traffic from your LAN to a specific destination within your LAN (for example to another router or a server) or outside your network (to an ISP defined default gateway for instance).
- **Default Routing** – This allows you to choose a default path for incoming data packets for which the destination address is unknown. This is particularly useful when/if the Router functions as the sole connection to the Internet.
- **ATM (Asynchronous Transfer Mode)** – The DSL-2500U supports Bridged Ethernet over ATM (RFC1483), IP over ATM (RFC1577), and PPP over ATM (RFC 2364).
- **Precise ATM Traffic Shaping** – Traffic shaping is a method of controlling the flow rate of ATM data cells. This function helps to establish the Quality of Service for ATM data transfer.
- **G.hs (Auto-handshake)** – This allows the Router to automatically choose either the G.lite or G.dmt ADSL connection standards.
- **High Performance** – Very high rates of data transfer are possible with the Router. Up to 8 Mbps downstream bit rate using the G.dmt standard.
- **Full Network Management** – The DSL-2500U incorporates SNMP (Simple Network Management Protocol) support for web-based management and text-based network management via an RS-232 or Telnet connection.
- **Telnet Connection** – The Telnet enables a network manager to access the Router’s management software remotely.
- **Easy Installation** – The DSL-2500U uses a web-based graphical user interface program for convenient management access and easy set up. Any common web browser software can be used to manage the Router.

Hardware Overview Connections





Installation

This section will walk you through the installation process. Placement of the Router is very important. Do not place the Router in an enclosed area such as a closet, cabinet, or in the attic or garage.

Before You Begin

Please read and make sure you understand all the prerequisites for proper installation of your new Router. Have all the necessary information and equipment on hand before beginning the installation.

Installation Notes

In order to establish a connection to the Internet it will be necessary to provide information to the Router that will be stored in its memory. For some users, only their account information (Username and Password) is required. For others, various parameters that control and define the Internet connection will be required. You can print out the two pages below and use the tables to list this information. This way you have a hard copy of all the information needed to setup the Router. If it is necessary to reconfigure the device, all the necessary information can be easily accessed. Be sure to keep this information safe and private.

Low Pass Filters

Since ADSL and telephone services share the same copper wiring to carry their respective signals, a filtering mechanism may be necessary to avoid mutual interference. A low pass filter device can be installed for each telephone that shares the line with the ADSL line. These filters are easy to install passive devices that connect to the ADSL device and/or telephone using standard telephone cable. Ask your service provider for more information about the use of low pass filters with your installation.

Operating Systems

The DSL-2500U uses an HTML-based web interface for setup and management. The web configuration manager may be accessed using any operating system capable of running web browser software, including Windows 98 SE, Windows ME, Windows 2000, Windows XP, and Windows Vista.

Web Browser

Any common web browser can be used to configure the Router using the web configuration management software. The program is designed to work best with more recently released browsers such as Opera, Microsoft Internet Explorer® version 6.0, Netscape Navigator® version 6.2.3, or later versions. The web browser must have JavaScript enabled. JavaScript is enabled by default on many browsers. Make sure JavaScript has not been disabled by other software (such as virus protection or web user security packages) that may be running on your computer.

Ethernet Port (NIC Adapter)

Any computer that uses the Router must be able to connect to it through the Ethernet port on the Router. This connection is an Ethernet connection and therefore requires that your computer be equipped with an Ethernet port as well. Most notebook computers are now sold with an Ethernet port already installed. Likewise, most fully assembled desktop computers come with an Ethernet NIC adapter as standard equipment. If your computer does not have an Ethernet port, you must install an Ethernet NIC adapter before you can use the Router. If you must install an adapter, follow the installation instructions that come with the Ethernet NIC adapter.

Additional Software

It may be necessary to install software on your computer that enables the computer to access the Internet. Additional software must be installed if you are using the device a simple bridge. For a bridged connection, the information needed to make and maintain the Internet connection is stored on another computer or gateway device, not in the Router itself.

If your ADSL service is delivered through a PPPoE or PPPoA connection, the information needed to establish and maintain the Internet connection can be stored in the Router. In this case, it is not necessary to install software on your computer. It may however be necessary to change some settings in the device, including account information used to identify and verify the connection.

All connections to the Internet require a unique global IP address. For bridged connections, the global IP settings must reside in a TCP/IP enabled device on the LAN side of the bridge, such as a PC, a server, a gateway device such as a router or similar firewall hardware. The IP address can be assigned in a number of ways. Your network service provider will give you instructions about any additional connection software or NIC configuration that may be required.

Information you will need from your ADSL service provider

Username

This is the Username used to log on to your ADSL service provider's network. Your ADSL service provider uses this to identify your account.

Password

This is the Password used, in conjunction with the Username above, to log on to your ADSL service provider's network. This is used to verify the identity of your account.

WAN Setting / Connection Type

These settings describe the method your ADSL service provider uses to transport data between the Internet and your computer. Most users will use the default settings. You may need to specify one of the following WAN Setting and Connection Type configurations (Connection Type settings listed in parenthesis):

- PPPoE/PPoA (PPPoE LLC, PPPoA LLC or PPPoA VC-Mux)
- Bridge Mode (1483 Bridged IP LLC or 1483 Bridged IP VC Mux)
- IPoA/MER (Static IP Address) (Bridged IP LLC, 1483 Bridged IP VC Mux, 1483 Routed IP LLC, 1483 Routed IP VC-Mux or IPoA)
- MER (Dynamic IP Address) (1483 Bridged IP LLC or 1483 Bridged IP VC-Mux)

Modulation Type

ADSL uses various standardized modulation techniques to transmit data over the allotted signal frequencies. Some users may need to change the type of modulation used for their service. The default DSL modulation (ADSL2+ Multi-Mode) used for the Router automatically detects all types of ADSL, ADSL2, and ADSL2+ modulation.

Security Protocol

This is the method your ADSL service provider will use to verify your Username and Password when you log on to their network. Your Router supports the PAP and CHAP protocols.

VPI

Most users will not be required to change this setting. The Virtual Path Identifier (VPI) is used in conjunction with the Virtual Channel Identifier (VCI) to identify the data path between your ADSL service provider's network and your computer. If you are setting up the Router for multiple virtual connections, you will need to configure the VPI and VCI as instructed by your ADSL service provider for the additional connections. This setting can be changed in the WAN Settings window of the web management interface.

VCI

Most users will not be required to change this setting. The Virtual Channel Identifier (VCI) used in conjunction with the VPI to identify the data path between your ADSL service provider's network and your computer. If you are setting up the Router for multiple virtual connections, you will need to configure the VPI and VCI as instructed by your ADSL service provider for the additional connections. This setting can be changed in the WAN Settings window of the web management interface.

Information you will need about DSL-2500U

Username

This is the Username needed access the Router's management interface. When you attempt to connect to the device through a web browser you will be prompted to enter this Username. The default Username for the Router is "admin." The user cannot change this.

Password

This is the Password you will be prompted to enter when you access the Router's management interface. The default Password is "admin." The user may change this.

LAN IP addresses for the DSL-2500U

This is the IP address you will enter into the Address field of your web browser to access the Router's configuration graphical user interface (GUI) using a web browser. The default IP address is 192.168.1.1. This may be changed to suit any IP address scheme the user desires. This address will be the base IP address used for DHCP service on the LAN when DHCP is enabled.

LAN Subnet Mask for the DSL-2500U

This is the subnet mask used by the DSL-2500U, and will be used throughout your LAN. The default subnet mask is 255.255.255.0. This can be changed later.

Information you will need about your LAN or computer:

Ethernet NIC

If your computer has an Ethernet NIC, you can connect the DSL-2500U to this Ethernet port using an Ethernet cable. You can also use the Ethernet ports on the DSL-2500U to connect to other computer or Ethernet devices.

DHCP Client status

Your DSL-2500U ADSL Router is configured, by default, to be a DHCP server. This means that it can assign an IP address, subnet mask, and a default gateway address to computers on your LAN. The default range of IP addresses the DSL-2500U will assign are from 192.168.1.2 to 192.168.1.254. Your computer (or computers) needs to be configured to obtain an IP address automatically (that is, they need to be configured as DHCP clients.)

It is recommended that you collect and record this information here, or in some other secure place, in case you have to re-configure your ADSL connection in the future.

Once you have the above information, you are ready to setup and configure your DSL-2500U ADSL Router.

Device Installation

The DSL-2500U connects two separate physical interfaces, an ADSL (WAN) and an Ethernet (LAN) interface. Place the Router in a location where it can be connected to the various devices as well as to a power source. The Router should not be located where it will be exposed to moisture or excessive heat. Make sure the cables and power cord are placed safely out of the way so they do not create a tripping hazard. As with any electrical appliance, observe common sense safety procedures.

The Router can be placed on a shelf or desktop, ideally you should be able to see the LED indicators on the front if you need to view them for troubleshooting.

Power on Router

The Router must be used with the power adapter included with the device.

1. Insert the AC Power Adapter cord into the power receptacle located on the rear panel of the Router and plug the adapter into a suitable nearby power source.
2. Depress the Power button into the on position. You should see the Power LED indicator light up and remain lit. The Status LED should light solid green and begin to blink after a few seconds.
3. If the Ethernet port is connected to a working device, check the Ethernet Link/Act LED indicators to make sure the connection is valid. The Router will attempt to establish the ADSL connection, if the ADSL line is connected and the Router is properly configured this should light up after several seconds. If this is the first time installing the device, some settings may need to be changed before the Router can establish a connection.

Factory Reset Button

The Router may be reset to the original factory default settings by using a ballpoint or paperclip to gently push down the reset button in the following sequence:

1. Press and hold the reset button while the device is powered off.
2. Turn on the power.
3. Wait for 5~8 seconds and then release the reset button.

Remember that this will wipe out any settings stored in flash memory including user account information and LAN IP settings. The device settings will be restored to the factory default IP address **192.168.1.1** and the subnet mask is **255.255.255.0**, the default management Username is “admin” and the default Password is “admin.”

Network Connections

Connect ADSL Line

Use the ADSL cable included with the Router to connect it to a telephone wall socket or receptacle. Plug one end of the cable into the ADSL port (RJ-11 receptacle) on the rear panel of the Router and insert the other end into the RJ-11 wall socket. If you are using a low pass filter device, follow the instructions included with the device or given to you by your service provider. The ADSL connection represents the WAN interface, the connection to the Internet. It is the physical link to the service provider’s network backbone and ultimately to the Internet.

Connect Router to Ethernet

The Router may be connected to a single computer or Ethernet device through the 10BASE-TX Ethernet port on the rear panel. Any connection to an Ethernet concentrating device such as a switch or hub must operate at a speed of 10/100 Mbps only. When connecting the Router to any Ethernet device that is capable of operating at speeds higher than 10Mbps, be sure that the device has auto-negotiation (NWay) enabled for the connecting port. Use standard twisted-pair cable with RJ-45 connectors. The RJ-45 port on the Router is a crossed port (MDI-X). Follow standard Ethernet guidelines when deciding what type of cable to use to make this connection. When connecting the Router directly to a PC or server use a normal straight-through cable. You should use a crossed cable when connecting the Router to a normal (MDI-X) port on a switch or hub. Use a normal straight-through cable when connecting it to an uplink (MDI-II) port on a hub or switch. The rules governing Ethernet cable lengths apply to the LAN to Router connection. Be sure that the cable connecting the LAN to the Router does not exceed 100 meters.

Hub or Switch to Router Connection

Connect the Router to an uplink port (MDI-II) on an Ethernet hub or switch with a straight-through cable. If you wish to reserve the uplink port on the switch or hub for another device, connect to any on the other MDI-X ports (1x, 2x, etc.) with a crossed cable.

Computer to Router Connection

You can connect the Router directly to a 10/100BASE-TX Ethernet adapter card (NIC) installed on a PC using the Ethernet cable provided.

Configuration

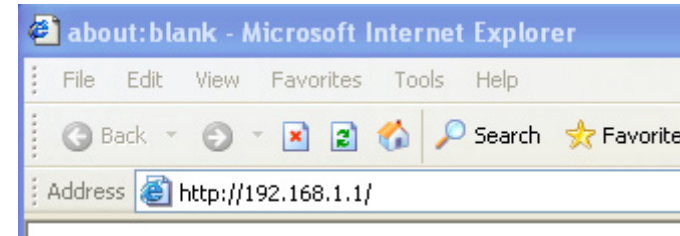
This section will show you how to configure your new D-Link Router using the web-based configuration utility.

Web-based Configuration Utility

Connect to the Router

To configure the WAN connection used by the Router it is first necessary to communicate with the Router through its management interface, which is HTML-based and can be accessed using a web browser. The easiest way to make sure your computer has the correct IP settings is to configure it to use the DHCP server in the Router. The next section describes how to change the IP configuration for a computer running a Windows operating system to be a DHCP client.

To access the configuration utility, open a web-browser such as Internet Explorer and enter the IP address of the router (**192.168.1.1**).



Type “**admin**” for the User Name and “**admin**” in the Password field. If you get a **Page Cannot be Displayed** error, please refer to the **Troubleshooting** section for assistance.



Quick Setup

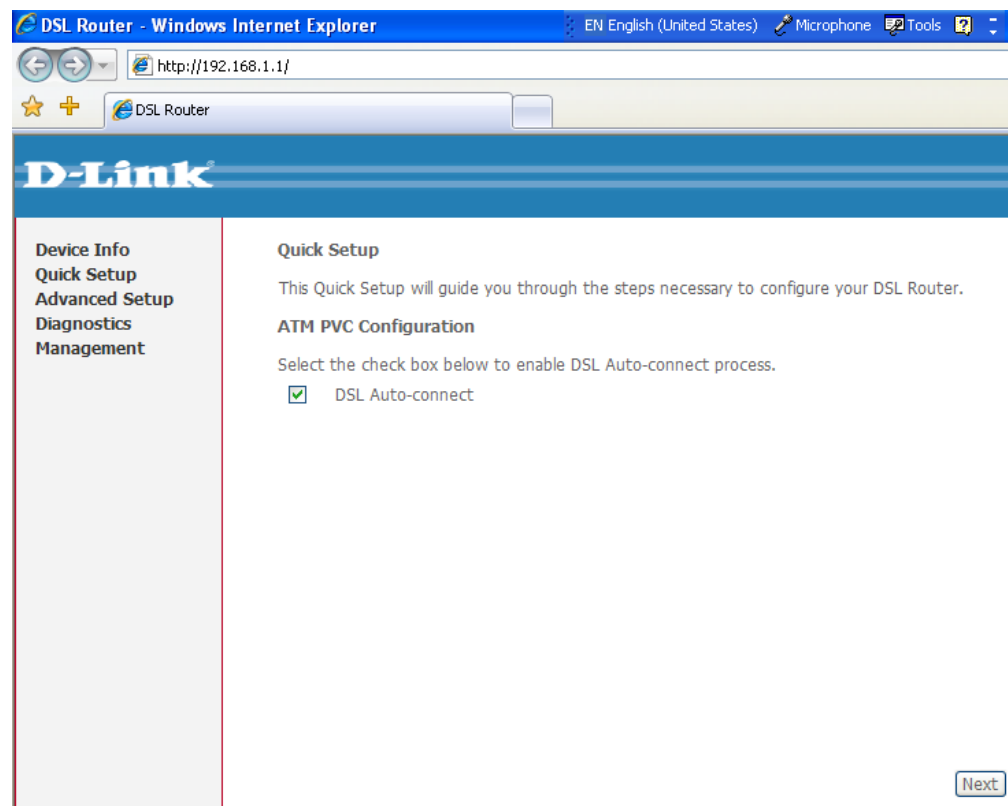
This chapter is concerned with using your computer to configure the WAN connection. The following chapter describes the various windows used to configure and monitor the Router including how to change IP settings and DHCP server setup.

QUICK SETUP

Click the **Quick Setup** link on the left panel of the opening page to launch a series of setup windows.

Tick the DSL Auto-connect check box and then click the **Next** button.

If the ADSL connection is down, unselect the DSL Auto-connect checkbox and then click the **Next** button to manually assign VPI and VCI values.



QUICK SETUP

This window allows you to set up ATM PVC configuration. Enter a Port Identifier, Virtual Path Identifier, and Virtual Channel Identifier. The VPI and VCI values should be provided by your ISP. This window also allows you to enable QoS by ticking the Enable Quality of Service check box. Click the **Next** button to continue.

QUICK SETUP – CONNECTION TYPE

This window allows you to select the appropriate connection type. The choices include PPP over ATM (PPPoA), PPP over Ethernet (PPPoE), MAC Encapsulation Routing (MER), IP over ATM (IPoA), and Bridging (default).

This window also allows you to use the drop-down menu to select the desired Encapsulation Mode. Click the **Next** button to continue.

Quick Setup

This Quick Setup will guide you through the steps necessary to configure your DSL Router.

ATM PVC Configuration

Select the check box below to enable DSL Auto-connect process.

DSL Auto-connect

The Port Identifier (PORT) Virtual Path Identifier (VPI) and Virtual Channel Identifier (VCI) are needed for setting up the ATM PVC. Do not change VPI and VCI numbers unless your ISP instructs you otherwise.

PORT: [0-3]

VPI: [0-255]

VCI: [32-65535]

Enable Quality Of Service

Enabling QoS for a PVC improves performance for selected classes of applications. However, since QoS also consumes system resources, the number of PVCs will be reduced consequently. Use **Advanced Setup/Quality of Service** to assign priorities for the applications.

Enable Quality Of Service

[Next](#)

Connection Type

Select the type of network protocol for IP over Ethernet as WAN interface

- PPP over ATM (PPPoA)
- PPP over Ethernet (PPPoE)
- MAC Encapsulation Routing (MER)
- IP over ATM (IPoA)
- Bridging

Encapsulation Mode

LLC/SNAP-BRIDGING

[Back](#) [Next](#)

QUICK SETUP – BRIDGING

To enable bridging, tick the Enable Bridge Service check box and enter a Service Name.

To disable WAN service, unselect the check box.

Click the **Next** button to continue.

QUICK SETUP – BRIDGING

This window allows you to configure the Router IP address and subnet mask for your LAN. Once you have entered an IP address and subnet mask, click the **Next** button to continue.

Unselect the check box below to disable this WAN service

Enable Bridge Service:

Service Name:

[Back](#) [Next](#)

Device Setup

Configure the DSL Router IP Address and Subnet Mask for your Local Area Network (LAN).

IP Address:

Subnet Mask:

[Back](#) [Next](#)

QUICK SETUP – BRIDGING

This summary window allows you to confirm the bridging settings you have just made. Click the **Save/Reboot** button to save your new bridging settings and restart the Router.

WAN Setup - Summary

Make sure that the settings below match the settings provided by your ISP.

PORT / VPI / VCI:	0 / 0 / 35
Connection Type:	Bridge
Service Name:	br_0_0_35
Service Category:	UBR
IP Address:	Not Applicable
Service State:	Enabled
NAT:	Disabled
Firewall:	Disabled
IGMP Multicast:	Not Applicable
Quality Of Service:	Disabled
MTU:	1492

Click "Save/Reboot" to save these settings and reboot router. Click "Back" to make any modifications.
NOTE: The configuration process takes about 1 minute to complete and your DSL Router will reboot.

[Back](#)

[Save/Reboot](#)

QUICK SETUP – PPPoA

Click the PPP over ATM (PPPoA) radio button on this window. This window also allows you to use the drop-down menu to select the desired Encapsulation Mode. Click the **Next** button to continue.

QUICK SETUP – PPPoA

This window allows you to set the username and the password for your PPP connection. This information is obtained from your ISP. Additional settings on this window will also depend on your ISP. Click the **Next** button to continue.

Connection Type

Select the type of network protocol for IP over Ethernet as WAN interface

- PPP over ATM (PPPoA)
- PPP over Ethernet (PPPoE)
- MAC Encapsulation Routing (MER)
- IP over ATM (IPoA)
- Bridging

Encapsulation Mode

VC/MUX ▼

[Back](#) [Next](#)

PPP Username and Password

PPP usually requires that you have a user name and password to establish your connection. In the boxes below, enter the user name and password that your ISP has provided to you.

PPP Username:
PPP Password:
Authentication Method: ▼

- Enable Fullcone NAT
- Dial on demand (with idle timeout timer)
- PPP IP extension
- Use Static IP Address
- Retry PPP password on authentication error
- Enable PPP Debug Mode

[Back](#) [Next](#)

QUICK SETUP - PPPoA

This window allows you to enable IGMP multicasting and WAN service. Most users will want to leave the MTU value at the default setting unless your ISP advises you to change it. Click the **Next** button to continue.

QUICK SETUP - PPPoA

This window allows you to enter an IP address and subnet mask for the LAN interface. In addition, you can either enable or disable the DHCP server.

To enable the DHCP server, enter a starting IP address, an ending IP address, and a subnet mask. You may also choose to change the default value of the leased time. Click the **Next** button to continue.

Enable IGMP Multicast, and WAN Service

Enable IGMP Multicast

Enable WAN Service

Service Name

PPPoE Link Setting

MTU

[Back](#) [Next](#)

Device Setup

Configure the DSL Router IP Address and Subnet Mask for LAN interface.

IP Address:

Subnet Mask:

Disable DHCP Server

Enable DHCP Server

Start IP Address:

End IP Address:

Subnet Mask:

Leased Time (hour):

Configure the second IP Address and Subnet Mask for LAN interface

[Back](#) [Next](#)

QUICK SETUP – PPPoA

This summary window allows you to confirm the settings you have just made. Click the **Save/Reboot** button to save your new PPP over ATM settings and restart the Router.

WAN Setup - Summary

Make sure that the settings below match the settings provided by your ISP.

PORT / VPI / VCI:	0 / 0 / 35
Connection Type:	PPPoA
Service Name:	pppoa_0_0_35_1
Service Category:	UBR
IP Address:	Automatically Assigned
Service State:	Enabled
NAT:	Enabled
Firewall:	Enabled
IGMP Multicast:	Disabled
Quality Of Service:	Disabled
MTU:	1492

Click "Save/Reboot" to save these settings and reboot router. Click "Back" to make any modifications.
NOTE: The configuration process takes about 1 minute to complete and your DSL Router will reboot.

[Back](#) [Save/Reboot](#)

QUICK SETUP – PPPoE

Click the PPP over Ethernet (PPPoE) radio button on this window. This window also allows you to use the drop-down menu to select the desired Encapsulation Mode. Click the **Next** button to continue.

QUICK SETUP – PPPoE

This window allows you to set the username and the password for your PPP connection. This information is obtained from your ISP. Additional settings on this window will also depend on your ISP. Click the **Next** button to continue.

Connection Type

Select the type of network protocol for IP over Ethernet as WAN interface

- PPP over ATM (PPPoA)
- PPP over Ethernet (PPPoE)
- MAC Encapsulation Routing (MER)
- IP over ATM (IPoA)
- Bridging

Encapsulation Mode

LLC/SNAP-BRIDGING ▾

[Back](#) [Next](#)

PPP Username and Password

PPP usually requires that you have a user name and password to establish your connection. In the boxes below, enter the user name and password that your ISP has provided to you.

PPP Username:
PPP Password:
PPPoE Service Name:
Authentication Method: ▾

- Enable Fullcone NAT
- Dial on demand (with idle timeout timer)
- PPP IP extension
- Use Static IP Address
- Retry PPP password on authentication error
- Enable PPP Debug Mode
- Bridge PPPoE Frames Between WAN and Local Ports (Default: Enabled)

[Back](#) [Next](#)

QUICK SETUP – PPPoE

This window allows you to enable IGMP multicasting and WAN service. Most users will want to leave the MTU value at the default setting unless your ISP advises you to change it. Click the **Next** button to continue.

Enable IGMP Multicast, and WAN Service

Enable IGMP Multicast

Enable WAN Service

Service Name

PPPoE Link Setting

MTU

[Back](#) [Next](#)

QUICK SETUP – PPPoE

This window allows you to enter an IP address and subnet mask for the LAN interface. In addition, you can either enable or disable the DHCP server.

To enable the DHCP server, enter a starting IP address, an ending IP address, and a subnet mask. You may also choose to change the default value of the leased time. Click the **Next** button to continue.

Device Setup

Configure the DSL Router IP Address and Subnet Mask for LAN interface.

IP Address:
Subnet Mask:

- Disable DHCP Server
- Enable DHCP Server

Start IP Address:
End IP Address:
Subnet Mask:
Leased Time (hour):

Configure the second IP Address and Subnet Mask for LAN interface

QUICK SETUP – PPPoE

This summary window allows you to confirm the settings you have just made. Click the **Save/Reboot** button to save your new PPP over Ethernet settings and restart the Router.

WAN Setup - Summary

Make sure that the settings below match the settings provided by your ISP.

PORT / VPI / VCI:	0 / 0 / 35
Connection Type:	PPPoE
Service Name:	pppoe_0_0_35_1
Service Category:	UBR
IP Address:	Automatically Assigned
Service State:	Enabled
NAT:	Enabled
Firewall:	Enabled
IGMP Multicast:	Disabled
Quality Of Service:	Disabled
MTU:	1492

Click "Save/Reboot" to save these settings and reboot router. Click "Back" to make any modifications.
NOTE: The configuration process takes about 1 minute to complete and your DSL Router will reboot.

[Back](#) [Save/Reboot](#)

QUICK SETUP – MER

Click the MAC Encapsulation Routing (MER) radio button on this window. This window also allows you to use the drop-down menu to select the desired Encapsulation Mode. Click the **Next** button to continue.

QUICK SETUP – MER

This window allows you to configure the WAN IP settings. This information is obtained from your ISP. Click the **Next** button to continue.

Connection Type

Select the type of network protocol for IP over Ethernet as WAN interface

- PPP over ATM (PPPoA)
- PPP over Ethernet (PPPoE)
- MAC Encapsulation Routing (MER)
- IP over ATM (IPoA)
- Bridging

Encapsulation Mode

LLC/SNAP-BRIDGING ▼

Back Next

WAN IP Settings

Enter information provided to you by your ISP to configure the WAN IP settings.
Notice: DHCP can be enabled for PVC in MER mode or IP over Ethernet as WAN interface if "Obtain an IP address automatically" is chosen. Changing the default gateway or the DNS effects the whole system. Configuring them with static values will disable the automatic assignment from DHCP or other WAN connection.
If you configure static default gateway over this PVC in MER mode, you must enter the IP address of the remote gateway in the "Use IP address". The "Use WAN interface" is optional.

- Obtain an IP address automatically
- Use the following IP address:
WAN IP Address:
WAN Subnet Mask:
- Obtain default gateway automatically
- Use the following default gateway:
 - Use IP Address:
 - Use WAN Interface: mer_0_0_35/ ▼
- Obtain DNS server addresses automatically
- Use the following DNS server addresses:
Primary DNS server:
Secondary DNS server:

Back Next

QUICK SETUP – MER

This window allows you to enable or disable Network Address Translation and a firewall for your Router. In addition, you can enable or disable IGMP multicasting and WAN service. Click the **Next** button to continue.

QUICK SETUP – MER

This window allows you to enter an IP address and subnet mask for the LAN interface. In addition, you can either enable or disable the DHCP server.

To enable the DHCP server, enter a starting IP address, an ending IP address, and a subnet mask. You may also choose to change the default value of the leased time. Click the **Next** button to continue.

Network Address Translation Settings

Network Address Translation (NAT) allows you to share one Wide Area Network (WAN) IP address for multiple computers on your Local Area Network (LAN).

Enable NAT

Enable Firewall

Enable IGMP Multicast, and WAN Service

Enable IGMP Multicast

Enable WAN Service

Service Name:

[Back](#) [Next](#)

Device Setup

Configure the DSL Router IP Address and Subnet Mask for LAN interface.

IP Address:

Subnet Mask:

Disable DHCP Server

Enable DHCP Server

Start IP Address:

End IP Address:

Subnet Mask:

Leased Time (hour):

Enable DHCP Server Relay

DHCP Server IP Address:

Configure the second IP Address and Subnet Mask for LAN interface

[Back](#) [Next](#)

QUICK SETUP – MER

This summary window allows you to confirm the settings you have just made. Click the **Save/Reboot** button to save your new MAC Encapsulation Routing settings and restart the Router.

WAN Setup - Summary

Make sure that the settings below match the settings provided by your ISP.

PORT / VPI / VCI:	0 / 0 / 35
Connection Type:	MER
Service Name:	mer_0_0_35
Service Category:	UBR
IP Address:	Automatically Assigned
Service State:	Enabled
NAT:	Disabled
Firewall:	Disabled
IGMP Multicast:	Disabled
Quality Of Service:	Disabled
MTU:	1492

Click "Save/Reboot" to save these settings and reboot router. Click "Back" to make any modifications.
NOTE: The configuration process takes about 1 minute to complete and your DSL Router will reboot.

[Back](#) [Save/Reboot](#)

QUICK SETUP – IPoA

Click the IP over ATM (IPoA) radio button on this window. This window also allows you to use the drop-down menu to select the desired Encapsulation Mode. Click the **Next** button to continue.

QUICK SETUP – IPoA

This window allows you to configure the WAN IP settings. This information is obtained from your ISP. Click the **Next** button to continue.

Connection Type

Select the type of network protocol for IP over Ethernet as WAN interface

- PPP over ATM (PPPoA)
- PPP over Ethernet (PPPoE)
- MAC Encapsulation Routing (MER)
- IP over ATM (IPoA)
- Bridging

Encapsulation Mode

LLC/SNAP-ROUTING ▾

[Back](#) [Next](#)

WAN IP Settings

Enter information provided to you by your ISP to configure the WAN IP settings.

Notice: DHCP is not supported in IPoA mode. Changing the default gateway or the DNS effects the whole system. Configuring them with static values will disable the automatic assignment from other WAN connection.

WAN IP Address:
WAN Subnet Mask:

- Use the following default gateway:
- Use IP Address:
 - Use WAN Interface:

Use the following DNS server addresses:

Primary DNS server:
Secondary DNS server:

[Back](#) [Next](#)

QUICK SETUP – IPoA

This window allows you to enable or disable Network Address Translation and a firewall for your Router. In addition, you can enable or disable IGMP multicasting and WAN service. Click the **Next** button to continue.

Network Address Translation Settings

Network Address Translation (NAT) allows you to share one Wide Area Network (WAN) IP address for multiple computers on your Local Area Network (LAN).

Enable NAT

Enable Firewall

Enable IGMP Multicast, and WAN Service

Enable IGMP Multicast

Enable WAN Service

Service Name:

QUICK SETUP – IPoA

This window allows you to enter an IP address and subnet mask for the LAN interface. In addition, you can either enable or disable the DHCP server.

To enable the DHCP server, enter a starting IP address, an ending IP address, and a subnet mask. You may also choose to change the default value of the leased time. Click the **Next** button to continue.

Device Setup

Configure the DSL Router IP Address and Subnet Mask for LAN interface.

IP Address:

Subnet Mask:

Disable DHCP Server

Enable DHCP Server

Start IP Address:

End IP Address:

Subnet Mask:

Leased Time (hour):

Enable DHCP Server Relay

DHCP Server IP Address:

Configure the second IP Address and Subnet Mask for LAN interface

QUICK SETUP – IPoA

This summary window allows you to confirm the settings you have just made. Click the **Save/Reboot** button to save your new IP over ATM settings and restart the Router.

WAN Setup - Summary

Make sure that the settings below match the settings provided by your ISP.

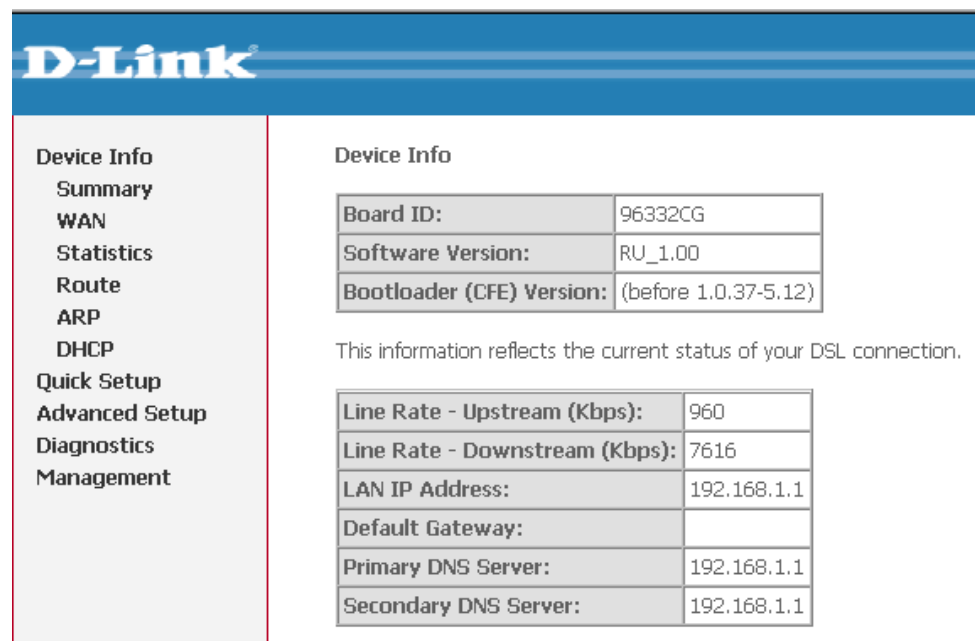
PORT / VPI / VCI:	0 / 0 / 35
Connection Type:	IPoA
Service Name:	ipoa_0_0_35
Service Category:	UBR
IP Address:	192.168.1.2
Service State:	Enabled
NAT:	Disabled
Firewall:	Disabled
IGMP Multicast:	Disabled
Quality Of Service:	Disabled
MTU:	1492

Click "Save/Reboot" to save these settings and reboot router. Click "Back" to make any modifications.
NOTE: The configuration process takes about 1 minute to complete and your DSL Router will reboot.

[Back](#) [Save/Reboot](#)

Device Info

To access the **Device Info** window, click either the **Device Info** or **Summary** button in the **Device Info** directory. The following page opens:



D-Link

Device Info

- Device Info
- Summary
- WAN
- Statistics
- Route
- ARP
- DHCP
- Quick Setup
- Advanced Setup
- Diagnostics
- Management

Device Info

Board ID:	96332CG
Software Version:	RU_1.00
Bootloader (CFE) Version:	(before 1.0.37-5.12)

This information reflects the current status of your DSL connection.

Line Rate - Upstream (Kbps):	960
Line Rate - Downstream (Kbps):	7616
LAN IP Address:	192.168.1.1
Default Gateway:	
Primary DNS Server:	192.168.1.1
Secondary DNS Server:	192.168.1.1

Summary

This window displays the current status of your DSL connection, including the software version, LAN IP address, and DNS server address.

Device Info

Board ID:	96332CG
Software Version:	RU_1.00
Bootloader (CFE) Version:	(before 1.0.37-5.12)

This information reflects the current status of your DSL connection.

Line Rate - Upstream (Kbps):	960
Line Rate - Downstream (Kbps):	7616
LAN IP Address:	192.168.1.1
Default Gateway:	
Primary DNS Server:	192.168.1.1
Secondary DNS Server:	192.168.1.1

WAN

To access the **WAN Info** window, click the **WAN** button in the **Device Info** directory.

This window displays the current status of your WAN connection.

WAN Info

Port/VPI/VCI	Con. ID	Category	Service	Interface	Protocol	Igmp	QoS	State	Status	IP Address
0/0/35	1	UBR	br_0_0_35	nas_0_0_35	Bridge	N/A	Disabled	Enabled	ADSL Link Down	
0/8/35	1	UBR	br_0_8_35	nas_0_8_35	Bridge	N/A	Disabled	Enabled	ADSL Link Down	

Statistics

To access the Router's first **Statistics** window, click the **Statistics** button in the **Device Info** directory.

This window displays the Router's LAN statistics. Click the **Reset Statistics** button to refresh these statistics.

Statistics -- LAN

Interface	Received				Transmitted			
	Bytes	Pkts	Errs	Drops	Bytes	Pkts	Errs	Drops
Ethernet	332245	2942	0	0	1382868	2135	0	0

Reset Statistics

This window displays the Router's WAN statistics. Click the **Reset Statistics** button to refresh these statistics.

Statistics -- WAN

Service	VPI/VCI	Protocol	Interface	Received				Transmitted				
				Bytes	Pkts	Errs	Drops	Bytes	Pkts	Errs	Drops	
br_0_0_35	0/0/35	Bridge	nas_0_0_35	0	0	0	0	0	0	0	0	1278
br_0_8_35	0/8/35	Bridge	nas_0_8_35	0	0	0	0	0	0	0	0	1276

Reset Statistics

This window displays the Router's ATM statistics. Click the **Reset** button to refresh these statistics.

ATM Interface Statistics

In Octets	Out Octets	In Errors	In Unknown	In Hec Errors	In Invalid Vpi Vci Errors	In Port Not Enable Errors	In PTI Errors	In Idle Cells	In Circuit Type Errors	In OAM RM CRC Errors	In GFC Errors
0	0	0	0	0	0	0	0	0	0	0	0

AAL5 Interface Statistics

In Octets	Out Octets	In Ucast Pkts	Out Ucast Pkts	In Errors	Out Errors	In Discards	Out Discards
0	0	0	0	0	0	0	0

AAL5 VCC Statistics

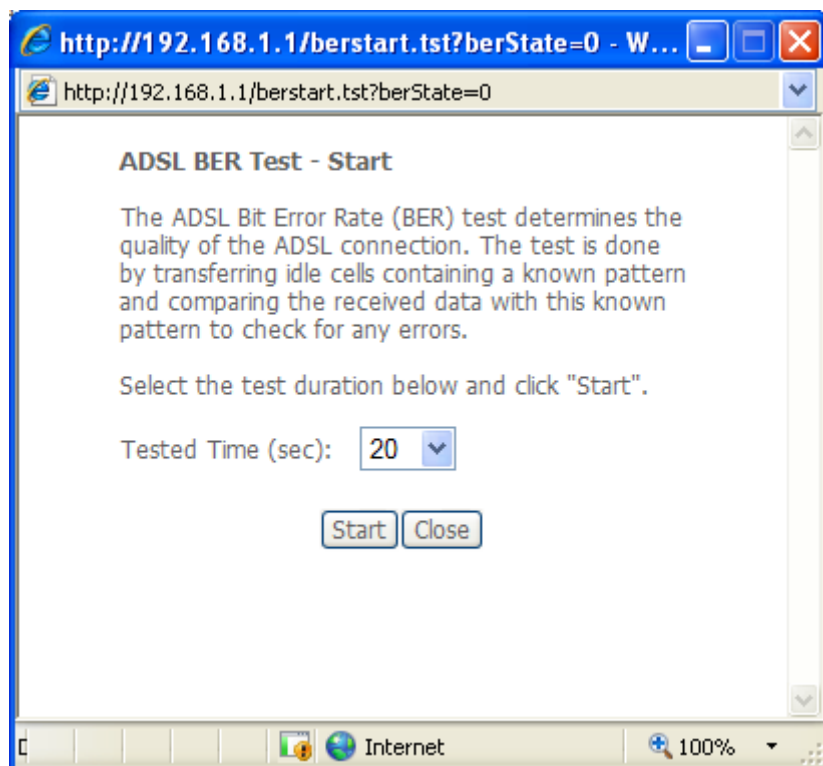
VPI/VCI	CRC Errors	SAR Timeouts	Oversized SDUs	Short Packet Errors	Length Errors

Reset

Section 3 – Configuration

This window displays the Router's ADSL statistics. Click the **Reset Statistics** button to refresh these statistics.

Click the **ADSL BER Test** button to access the ADSL Bit Error Rate Test window displayed below:



Statistics -- ADSL

Mode:		
Type:		
Line Coding:		
Status:		Link Down
Link Power State:		L0
	Downstream	Upstream
SNR Margin (dB):		
Attenuation (dB):		
Output Power (dBm):		
Attainable Rate (Kbps):		
Rate (Kbps):		
Super Frames:		
Super Frame Errors:		
RS Words:		
RS Correctable Errors:		
RS Uncorrectable Errors:		
HEC Errors:		
OCD Errors:		
LCD Errors:		
Total Cells:		
Data Cells:		
Bit Errors:		
Total ES:		
Total SES:		
Total UAS:		

ADSL BER Test

Reset Statistics

Route

To access the **Device Info – Route** window, click the **Route** button in the **Device Info** directory.

This read-only window displays routing info.

Device Info -- Route

Flags: U - up, ! - reject, G - gateway, H - host, R - reinstate
D - dynamic (redirect), M - modified (redirect).

Destination	Gateway	Subnet Mask	Flag	Metric	Service	Interface
10.0.0.0	0.0.0.0	255.0.0.0	U	0		br0

ARP

To access the **Device Info – ARP** window, click the **ARP** button in the **Device Info** directory.

This read-only window displays Address Resolution Protocol info.

Device Info -- ARP

IP address	Flags	HW Address	Device
10.24.22.26	Complete	00:15:F2:09:9C:DE	br0

DHCP

To access the **Device Info – DHCP Leases** window, click the **DHCP** button in the **Device Info** directory.

This read-only window displays DHCP lease info.

Device Info -- DHCP Leases

Hostname	MAC Address	IP Address	Expires In
----------	-------------	------------	------------

Advanced Setup

This chapter include the more advanced features used for network management and security as well as administrative tools to manage the Router, view status and other information used to examine performance and for troubleshooting.

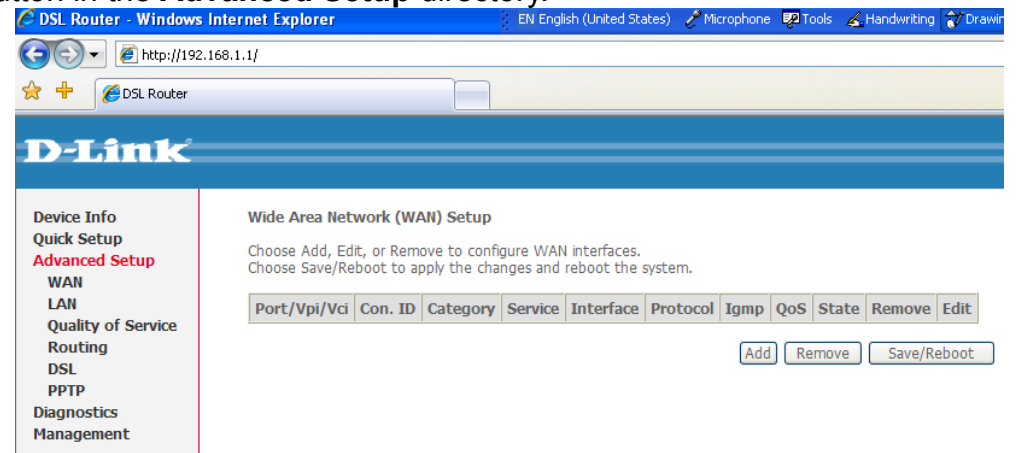
WAN

To access the **Wide Area Network (WAN) Setup** window, click the **WAN** button in the **Advanced Setup** directory.

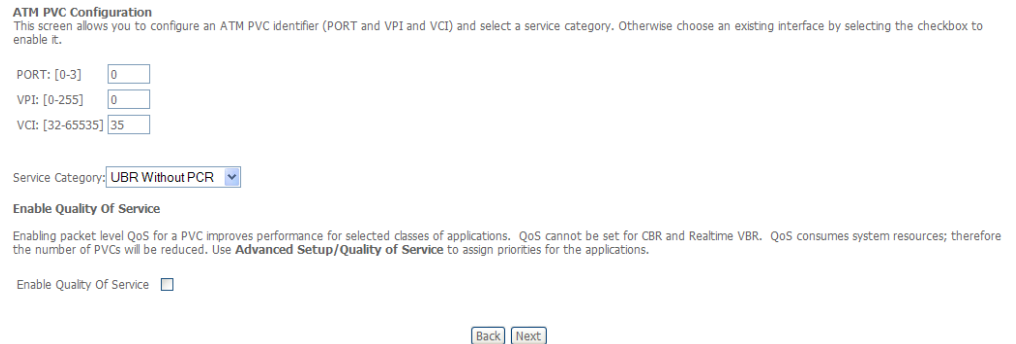
This window is used to configure the WAN interface. You can add, delete, and modify WAN interfaces on this window.

Once the desired changes to the WAN interface are complete, click the **Save/Reboot** button.

If you are setting up the WAN interface for the first time, click the **Add** button.



The **ATM PVC Configuration** window allows you to set up ATM PVC configuration. Enter a Port Identifier, Virtual Path Identifier, and Virtual Channel Identifier. The VPI and VCI values should be provided by your ISP. This window also allows you to enable QoS by ticking the Enable Quality of Service check box. Click the **Next** button to continue.



This window allows you to select the appropriate connection type. The choices include PPP over ATM (PPPoA), PPP over Ethernet (PPPoE), MAC Encapsulation Routing (MER), IP over ATM (IPoA), and Bridging (default).

This window also allows you to use the drop-down menu to select the desired Encapsulation Mode. Click the **Next** button to continue.

For further information about each of the five connection types available on the Router, please go to the Quick Setup section earlier in this manual as all of the windows are identical.

Connection Type

Select the type of network protocol for IP over Ethernet as WAN interface

- PPP over ATM (PPPoA)
- PPP over Ethernet (PPPoE)
- MAC Encapsulation Routing (MER)
- IP over ATM (IPoA)
- Bridging

Encapsulation Mode

LLC/SNAP-BRIDGING ▼

[Back](#) [Next](#)

LAN

You can configure the LAN IP address to suit your preference. Many users will find it convenient to use the default settings together with DHCP service to manage the IP settings for their private network. The IP address of the Router is the base address used for DHCP. In order to use the Router for DHCP on your LAN, the IP address pool used for DHCP must be compatible with the IP address of the Router. The IP addresses available in the DHCP IP address pool will change automatically if you change the IP address of the Router.

To access the **Local Area Network (LAN) Setup** window, click the **LAN** button in the **Advanced Setup** directory.

This window allows you to set up a LAN interface. When you are finished, click either the **Save** or **Save/Reboot** button.

Local Area Network (LAN) Setup

Configure the DSL Router IP Address and Subnet Mask for LAN interface. Save button only saves the LAN configuration data. Save/Reboot button saves the LAN configuration data and reboots the router to make the new configuration effective.

IP Address:	<input type="text" value="10.1.1.1"/>
Subnet Mask:	<input type="text" value="255.0.0.0"/>
Host Name:	<input type="text" value="DLink"/>
Domain Name:	<input type="text" value="Home"/>

- Enable IGMP Snooping
- Standard Mode
- Blocking Mode

Quality of Service

QoS or Quality of Service allows your Router to help prioritize the data packet flow in your Router and network. This is very important for time sensitive applications such as VoIP where it may help prevent dropped calls. Large amounts of non-critical data can be scaled so as not to affect these prioritized sensitive real-time programs.

To access the **QoS – Queue Management Configuration** window, click the **Quality of Service** button in the **Advanced Setup** directory. This window allows you to set up QoS on the Router. When you are finished, click on the **Save/Apply** button.

QoS -- Queue Management Configuration

If Enable QoS checkbox is selected, choose a default DSCP mark to automatically mark incoming traffic without reference to a particular classifier. Click 'Save/Apply' button to save it.

Note: If Enable QoS checkbox is not selected, all QoS will be disabled for all interfaces.

Note: The default DSCP mark is used to mark all egress packets that do not match any classification rules.

Enable QoS

Select Default DSCP Mark: No Change(-1)

[Save/Apply](#)

Queue Config

Click the **Add** button to add a QoS Queue Configuration table entry.

QoS Queue Configuration -- A maximum 16 entries can be configured.

Interfacename	Description	Precedence	Queue Key	Enable	Remove
<p>Add Remove Save/Reboot</p>					

This window allows you to configure a QoS queue entry and assign it a specific network interface.

Click the **Save/Apply** button to save and activate the filter.

QoS Queue Configuration

The screen allows you to configure a QoS queue entry and assign it to a specific network interface. Each interface with QoS enabled will be allocated three queues by default. Each of the queues can be configured for a specific precedence. The queue entry configured here will be used by the classifier to place ingress packets appropriately. Note: Lower integer values for precedence imply higher priority for this queue relative to others. Click 'Save/Apply' to save and activate the filter.

Queue Configuration Status:

Queue:

Queue Precedence:

[Save/Apply](#)

QoS Classification

Choose **Add** or **Remove** to configure network traffic classes.

Use this window to create a traffic class rule to classify the upstream traffic, assign a queue that defines the precedence and the interface, and optionally overwrite the IP header DSCP byte. A rule consists of a class name and at least one condition. Please remember that all of the specified conditions on this window must be met for the rule to take effect.

Click the **Save/Apply** button to save and activate this rule.

Quality of Service Setup

Choose Add or Remove to configure network traffic classes.

MARK			TRAFFIC CLASSIFICATION RULES														
Class Name	DSCP Mark	Queue ID	802.1P Mark	Lan Port	Protocol	DSCP	Source Addr./Mask	Source Port	Dest. Addr./Mask	Dest. Port	Source MAC Addr./Mask	Destination MAC Addr./Mask	802.1P	Order	Enable/Disable	Remove	Edit

Add Network Traffic Class Rule

The screen creates a traffic class rule to classify the upstream traffic, assign queue which defines the precedence and the interface and optionally overwrite the IP header DSCP byte. A rule consists of a class name and at least one condition below. All of the specified conditions in this classification rule must be satisfied for the rule to take effect. Click 'Save/Apply' to save and activate the rule.

Traffic Class Name:

Rule Order:

Rule Status:

Assign ATM Priority and/or DSCP Mark for the class

If non-blank value is selected for 'Assign Differentiated Services Code Point (DSCP) Mark', the corresponding DSCP byte in the IP header of the upstream packet is overwritten by the selected value.

Assign Classification Queue:

Assign Differentiated Services Code Point (DSCP) Mark:

Mark 802.1p if 802.1q is enabled:

Specify Traffic Classification Rules

Enter the following conditions either for IP level, SET-1, or for IEEE 802.1p, SET-2.

SET-1

Protocol:

Differentiated Services Code Point (DSCP) Check:

IP Address:

Source Subnet Mask:

UDP/TCP Source Port (port or port:port):

Destination IP Address:

Destination Subnet Mask:

UDP/TCP Destination Port (port or port:port):

Source MAC Address:

Source MAC Mask:

Destination MAC Address:

Destination MAC Mask:

(The MAC address format is xxxxxxxxxxxxxx)

(The MAC address format is xxxxxxxxxxxxxx)

SET-2

802.1p Priority:

Routing

To access the **Routing** windows, click the **Routing** button in the **Advanced Setup** directory.

If the **Enable Automatic Assigned Default Gateway** checkbox is ticked, the Router will accept the first default gateway assignment received from one of the enabled PPPoA, PPPoE, or MER/DHCP enabled PVC(s).

If this checkbox is not ticked, enter the static default gateway and/or a WAN interface. Click the **Save/Apply** button when you are finished.

Routing -- Default Gateway

If **Enable Automatic Assigned Default Gateway** checkbox is selected, this router will accept the first received default gateway assignment from one of the PPPoA, PPPoE or MER/DHCP enabled PVC(s). If the checkbox is not selected, enter the static default gateway AND/OR a WAN interface. Click 'Save/Apply' button to save it.

NOTE: If changing the Automatic Assigned Default Gateway from unselected to selected, You must reboot the router to get the automatic assigned default gateway.

Enable Automatic Assigned Default Gateway

Save/Apply

Click the **Add** button on the **Routing – Static Route** window to access the following window displayed on the next page.

Routing -- Static Route (A maximum 32 entries can be configured)

Destination	Subnet Mask	Gateway	Interface	Remove
-------------	-------------	---------	-----------	--------

Add Remove

Enter the static routing information for an entry to the routing table.

Click the **Save/Apply** button when you are finished.

Routing -- Static Route Add

Enter the destination network address, subnet mask, gateway AND/OR available WAN interface then click "Save/Apply" to add the entry to the routing table.

Destination Network Address:
Subnet Mask:
 Use Gateway IP Address
 Use Interface

Save/Apply

DSL

To access the **DSL Settings** window, click the **DSL Setup** button in the **Advanced Setup** directory.

This window allows you to select the desired modulation, phone line pair, and capability. Click the **Save/Apply** button when you are finished.

Click the **Advanced Settings** button to select a DSL test mode.

DSL Settings

Select the modulation below.

- G.Dmt Enabled
- G.lite Enabled
- T1.413 Enabled
- ADSL2 Enabled
- AnnexL Enabled
- ADSL2+ Enabled
- AnnexM Enabled

Select the phone line pair below.

- Inner pair
- Outer pair

Capability

- Bitswap Enable
- SRA Enable

Section 3 – Configuration

Select the desired DSL test mode and then click the **Apply** button.

Click the **Tone Selection** button to modify the upstream and downstream tones.

DSL Advanced Settings

Select the test mode below.

- Normal
- Reverb
- Medley
- No retrain
- L3

Apply

Tone Selection

Select the appropriate upstream and downstream tones for your ADSL connection. Click the **Apply** button to let your settings take effect.

ADSL Tone Settings

Upstream Tones															
<input checked="" type="checkbox"/> 0	<input checked="" type="checkbox"/> 1	<input checked="" type="checkbox"/> 2	<input checked="" type="checkbox"/> 3	<input checked="" type="checkbox"/> 4	<input checked="" type="checkbox"/> 5	<input checked="" type="checkbox"/> 6	<input checked="" type="checkbox"/> 7	<input checked="" type="checkbox"/> 8	<input checked="" type="checkbox"/> 9	<input checked="" type="checkbox"/> 10	<input checked="" type="checkbox"/> 11	<input checked="" type="checkbox"/> 12	<input checked="" type="checkbox"/> 13	<input checked="" type="checkbox"/> 14	<input checked="" type="checkbox"/> 15
<input checked="" type="checkbox"/> 16	<input checked="" type="checkbox"/> 17	<input checked="" type="checkbox"/> 18	<input checked="" type="checkbox"/> 19	<input checked="" type="checkbox"/> 20	<input checked="" type="checkbox"/> 21	<input checked="" type="checkbox"/> 22	<input checked="" type="checkbox"/> 23	<input checked="" type="checkbox"/> 24	<input checked="" type="checkbox"/> 25	<input checked="" type="checkbox"/> 26	<input checked="" type="checkbox"/> 27	<input checked="" type="checkbox"/> 28	<input checked="" type="checkbox"/> 29	<input checked="" type="checkbox"/> 30	<input checked="" type="checkbox"/> 31
Downstream Tones															
<input checked="" type="checkbox"/> 32	<input checked="" type="checkbox"/> 33	<input checked="" type="checkbox"/> 34	<input checked="" type="checkbox"/> 35	<input checked="" type="checkbox"/> 36	<input checked="" type="checkbox"/> 37	<input checked="" type="checkbox"/> 38	<input checked="" type="checkbox"/> 39	<input checked="" type="checkbox"/> 40	<input checked="" type="checkbox"/> 41	<input checked="" type="checkbox"/> 42	<input checked="" type="checkbox"/> 43	<input checked="" type="checkbox"/> 44	<input checked="" type="checkbox"/> 45	<input checked="" type="checkbox"/> 46	<input checked="" type="checkbox"/> 47
<input checked="" type="checkbox"/> 48	<input checked="" type="checkbox"/> 49	<input checked="" type="checkbox"/> 50	<input checked="" type="checkbox"/> 51	<input checked="" type="checkbox"/> 52	<input checked="" type="checkbox"/> 53	<input checked="" type="checkbox"/> 54	<input checked="" type="checkbox"/> 55	<input checked="" type="checkbox"/> 56	<input checked="" type="checkbox"/> 57	<input checked="" type="checkbox"/> 58	<input checked="" type="checkbox"/> 59	<input checked="" type="checkbox"/> 60	<input checked="" type="checkbox"/> 61	<input checked="" type="checkbox"/> 62	<input checked="" type="checkbox"/> 63
<input checked="" type="checkbox"/> 64	<input checked="" type="checkbox"/> 65	<input checked="" type="checkbox"/> 66	<input checked="" type="checkbox"/> 67	<input checked="" type="checkbox"/> 68	<input checked="" type="checkbox"/> 69	<input checked="" type="checkbox"/> 70	<input checked="" type="checkbox"/> 71	<input checked="" type="checkbox"/> 72	<input checked="" type="checkbox"/> 73	<input checked="" type="checkbox"/> 74	<input checked="" type="checkbox"/> 75	<input checked="" type="checkbox"/> 76	<input checked="" type="checkbox"/> 77	<input checked="" type="checkbox"/> 78	<input checked="" type="checkbox"/> 79
<input checked="" type="checkbox"/> 80	<input checked="" type="checkbox"/> 81	<input checked="" type="checkbox"/> 82	<input checked="" type="checkbox"/> 83	<input checked="" type="checkbox"/> 84	<input checked="" type="checkbox"/> 85	<input checked="" type="checkbox"/> 86	<input checked="" type="checkbox"/> 87	<input checked="" type="checkbox"/> 88	<input checked="" type="checkbox"/> 89	<input checked="" type="checkbox"/> 90	<input checked="" type="checkbox"/> 91	<input checked="" type="checkbox"/> 92	<input checked="" type="checkbox"/> 93	<input checked="" type="checkbox"/> 94	<input checked="" type="checkbox"/> 95
<input checked="" type="checkbox"/> 96	<input checked="" type="checkbox"/> 97	<input checked="" type="checkbox"/> 98	<input checked="" type="checkbox"/> 99	<input checked="" type="checkbox"/> 100	<input checked="" type="checkbox"/> 101	<input checked="" type="checkbox"/> 102	<input checked="" type="checkbox"/> 103	<input checked="" type="checkbox"/> 104	<input checked="" type="checkbox"/> 105	<input checked="" type="checkbox"/> 106	<input checked="" type="checkbox"/> 107	<input checked="" type="checkbox"/> 108	<input checked="" type="checkbox"/> 109	<input checked="" type="checkbox"/> 110	<input checked="" type="checkbox"/> 111
<input checked="" type="checkbox"/> 112	<input checked="" type="checkbox"/> 113	<input checked="" type="checkbox"/> 114	<input checked="" type="checkbox"/> 115	<input checked="" type="checkbox"/> 116	<input checked="" type="checkbox"/> 117	<input checked="" type="checkbox"/> 118	<input checked="" type="checkbox"/> 119	<input checked="" type="checkbox"/> 120	<input checked="" type="checkbox"/> 121	<input checked="" type="checkbox"/> 122	<input checked="" type="checkbox"/> 123	<input checked="" type="checkbox"/> 124	<input checked="" type="checkbox"/> 125	<input checked="" type="checkbox"/> 126	<input checked="" type="checkbox"/> 127
<input checked="" type="checkbox"/> 128	<input checked="" type="checkbox"/> 129	<input checked="" type="checkbox"/> 130	<input checked="" type="checkbox"/> 131	<input checked="" type="checkbox"/> 132	<input checked="" type="checkbox"/> 133	<input checked="" type="checkbox"/> 134	<input checked="" type="checkbox"/> 135	<input checked="" type="checkbox"/> 136	<input checked="" type="checkbox"/> 137	<input checked="" type="checkbox"/> 138	<input checked="" type="checkbox"/> 139	<input checked="" type="checkbox"/> 140	<input checked="" type="checkbox"/> 141	<input checked="" type="checkbox"/> 142	<input checked="" type="checkbox"/> 143
<input checked="" type="checkbox"/> 144	<input checked="" type="checkbox"/> 145	<input checked="" type="checkbox"/> 146	<input checked="" type="checkbox"/> 147	<input checked="" type="checkbox"/> 148	<input checked="" type="checkbox"/> 149	<input checked="" type="checkbox"/> 150	<input checked="" type="checkbox"/> 151	<input checked="" type="checkbox"/> 152	<input checked="" type="checkbox"/> 153	<input checked="" type="checkbox"/> 154	<input checked="" type="checkbox"/> 155	<input checked="" type="checkbox"/> 156	<input checked="" type="checkbox"/> 157	<input checked="" type="checkbox"/> 158	<input checked="" type="checkbox"/> 159
<input checked="" type="checkbox"/> 160	<input checked="" type="checkbox"/> 161	<input checked="" type="checkbox"/> 162	<input checked="" type="checkbox"/> 163	<input checked="" type="checkbox"/> 164	<input checked="" type="checkbox"/> 165	<input checked="" type="checkbox"/> 166	<input checked="" type="checkbox"/> 167	<input checked="" type="checkbox"/> 168	<input checked="" type="checkbox"/> 169	<input checked="" type="checkbox"/> 170	<input checked="" type="checkbox"/> 171	<input checked="" type="checkbox"/> 172	<input checked="" type="checkbox"/> 173	<input checked="" type="checkbox"/> 174	<input checked="" type="checkbox"/> 175
<input checked="" type="checkbox"/> 176	<input checked="" type="checkbox"/> 177	<input checked="" type="checkbox"/> 178	<input checked="" type="checkbox"/> 179	<input checked="" type="checkbox"/> 180	<input checked="" type="checkbox"/> 181	<input checked="" type="checkbox"/> 182	<input checked="" type="checkbox"/> 183	<input checked="" type="checkbox"/> 184	<input checked="" type="checkbox"/> 185	<input checked="" type="checkbox"/> 186	<input checked="" type="checkbox"/> 187	<input checked="" type="checkbox"/> 188	<input checked="" type="checkbox"/> 189	<input checked="" type="checkbox"/> 190	<input checked="" type="checkbox"/> 191
<input checked="" type="checkbox"/> 192	<input checked="" type="checkbox"/> 193	<input checked="" type="checkbox"/> 194	<input checked="" type="checkbox"/> 195	<input checked="" type="checkbox"/> 196	<input checked="" type="checkbox"/> 197	<input checked="" type="checkbox"/> 198	<input checked="" type="checkbox"/> 199	<input checked="" type="checkbox"/> 200	<input checked="" type="checkbox"/> 201	<input checked="" type="checkbox"/> 202	<input checked="" type="checkbox"/> 203	<input checked="" type="checkbox"/> 204	<input checked="" type="checkbox"/> 205	<input checked="" type="checkbox"/> 206	<input checked="" type="checkbox"/> 207
<input checked="" type="checkbox"/> 208	<input checked="" type="checkbox"/> 209	<input checked="" type="checkbox"/> 210	<input checked="" type="checkbox"/> 211	<input checked="" type="checkbox"/> 212	<input checked="" type="checkbox"/> 213	<input checked="" type="checkbox"/> 214	<input checked="" type="checkbox"/> 215	<input checked="" type="checkbox"/> 216	<input checked="" type="checkbox"/> 217	<input checked="" type="checkbox"/> 218	<input checked="" type="checkbox"/> 219	<input checked="" type="checkbox"/> 220	<input checked="" type="checkbox"/> 221	<input checked="" type="checkbox"/> 222	<input checked="" type="checkbox"/> 223
<input checked="" type="checkbox"/> 224	<input checked="" type="checkbox"/> 225	<input checked="" type="checkbox"/> 226	<input checked="" type="checkbox"/> 227	<input checked="" type="checkbox"/> 228	<input checked="" type="checkbox"/> 229	<input checked="" type="checkbox"/> 230	<input checked="" type="checkbox"/> 231	<input checked="" type="checkbox"/> 232	<input checked="" type="checkbox"/> 233	<input checked="" type="checkbox"/> 234	<input checked="" type="checkbox"/> 235	<input checked="" type="checkbox"/> 236	<input checked="" type="checkbox"/> 237	<input checked="" type="checkbox"/> 238	<input checked="" type="checkbox"/> 239
<input checked="" type="checkbox"/> 240	<input checked="" type="checkbox"/> 241	<input checked="" type="checkbox"/> 242	<input checked="" type="checkbox"/> 243	<input checked="" type="checkbox"/> 244	<input checked="" type="checkbox"/> 245	<input checked="" type="checkbox"/> 246	<input checked="" type="checkbox"/> 247	<input checked="" type="checkbox"/> 248	<input checked="" type="checkbox"/> 249	<input checked="" type="checkbox"/> 250	<input checked="" type="checkbox"/> 251	<input checked="" type="checkbox"/> 252	<input checked="" type="checkbox"/> 253	<input checked="" type="checkbox"/> 254	<input checked="" type="checkbox"/> 255

Check All Clear All Apply Close

PPTP

To access the **PPTP Setting** window, click the **PPTP** button in the **Advanced Setup** directory.

To set up Point-to-Point Tunnel Protocol, tick the Enable check box, enter the appropriate information in the fields offered, and then click the **Save/Apply** button when you are finished.

PPTP Setting

Set Point to Point Tunnel Protocol (VPN)

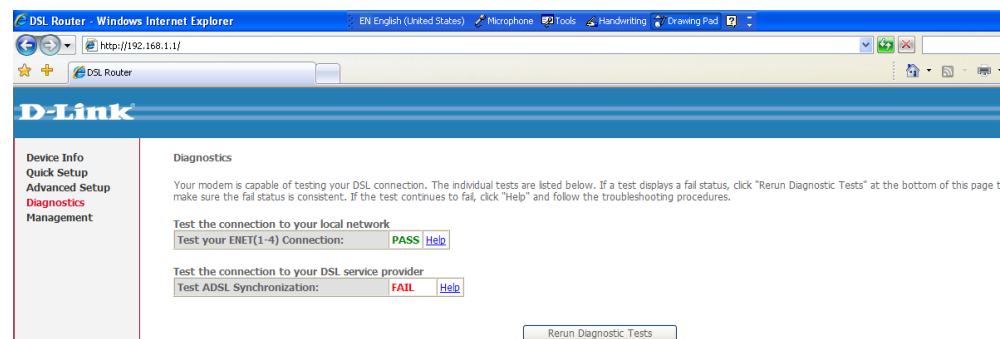
Enable	<input type="checkbox"/>
Tunnel Name	<input type="text"/>
PPTP Server IP Address	<input type="text"/>
User Name	<input type="text"/>
Password	<input type="text"/>
Peer IP Address	<input type="text"/>
Peer Subnet Mask	<input type="text"/>

Save/Apply

Diagnostics

To access the **Diagnostics** window, click the **Diagnostics** button in the **Diagnostics** directory.

This window is used to test connectivity of the Router.



Management

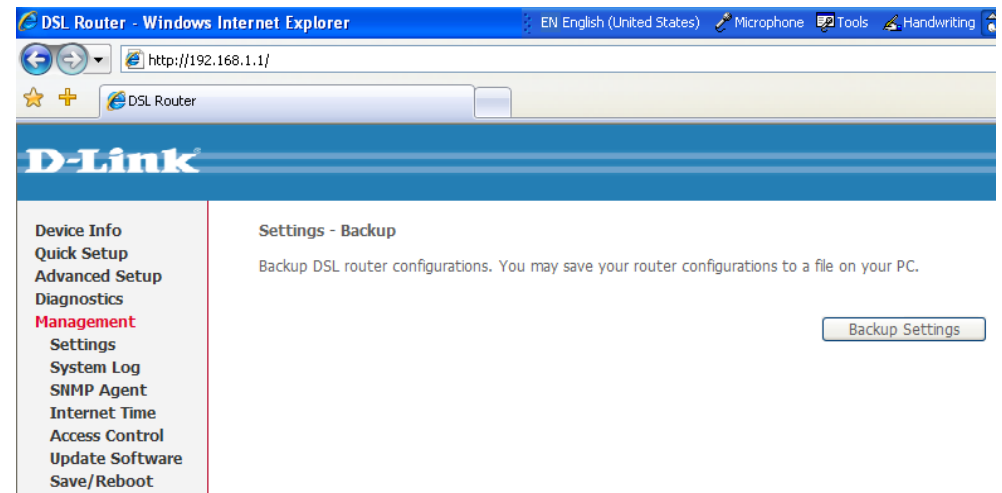
The Management directory features an array of options designed to help you get the most out of your Router.

Settings

To access the **Settings - Backup** window, click the **Settings** button in the **Management** directory.

This window allows you to backup your DSL Router configurations.

Click the **Backup Settings** button to save your Router configurations to a file on your computer.



System Log

These windows allow you to view the System Log and configure the System Log options. To access the **System Log** window, click the **System Log** button in the **Management** directory.

Click the **View System Log** button to view the System Log.

Click the **Configure System Log** button to configure the System Log options.

Click on the **Refresh** button to refresh the system log settings.

System Log

The System Log dialog allows you to view the System Log and configure the System Log options.

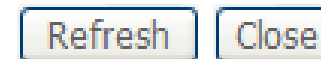
Click "View System Log" to view the System Log.

Click "Configure System Log" to configure the System Log options.



System Log

Date/Time	Facility	Severity	Message
-----------	----------	----------	---------



System Log – Configuration

The system log displays chronological event log data. The event log can be read from local host or sent to a System Log server. The available event severity levels are: **Emergency, Alert, Critical, Error, Warning, Notice, Informational, and Debugging.**

This window allows you to log selected events. When you are finished, click the **Save/Apply** button.

System Log -- Configuration

If the log mode is enabled, the system will begin to log all the selected events. For the Log Level, all events above or equal to the selected level will be logged. For the Display Level, all logged events above or equal to the selected level will be displayed. If the selected mode is 'Remote' or 'Both,' events will be sent to the specified IP address and UDP port of the remote syslog server. If the selected mode is 'Local' or 'Both,' events will be recorded in the local memory.

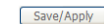
Select the desired values and click 'Save/Apply' to configure the system log options.

Log: Disable Enable

Log Level:

Display Level:

Mode:



SNMP Agent

To access the **SNMP – Configuration** window, click the **SNMP Agent** button in the **Management** directory.

Simple Network Management Protocol allows a management application to retrieve statistics and status from the SNMP agent in the Router. When you are finished, click the **Save/Apply** button.

SNMP - Configuration

Simple Network Management Protocol (SNMP) allows a management application to retrieve statistics and status from the SNMP agent in this device.

Select the desired values and click "Apply" to configure the SNMP options.

SNMP Agent Disable Enable

Read Community:	<input type="text" value="public"/>
Set Community:	<input type="text" value="private"/>
System Name:	<input type="text" value="DSL-2500U"/>
System Location:	<input type="text" value="D-Link"/>
System Contact:	<input type="text" value="ADSL"/>
Trap Manager IP:	<input type="text" value="0.0.0.0"/>

Internet Time

To access the **Time settings** window, click the **Internet Time** button in the **Management** directory.

This window allows you to set the Router's time configuration. When you are finished, click the **Save/Apply** button.

Time settings

This page allows you to the modem's time configuration.

Automatically synchronize with Internet time servers

Access Control

To access the **Access Control** windows, click the **Access Control** button in the **Management** directory.

Access Control – Services

Enable or disable the desired LAN services. When you are finished, click the **Save/Apply** button.

Access Control -- Services

A Service Control List ("SCL") enables or disables services from being used.

Services	LAN
HTTP	<input checked="" type="checkbox"/> Enable
ICMP	Enable
SNMP	<input checked="" type="checkbox"/> Enable
TFTP	<input checked="" type="checkbox"/> Enable

Save/Apply

Access Control – IP Address

This window allows you to enable or disable Access Control Mode. To add an IP address management station, click the **Add** button.

Access Control -- IP Address

The IP Address Access Control mode, if enabled, permits access to local management services from IP addresses contained in the Access Control List. If the Access Control mode is disabled, the system will not validate IP addresses for incoming packets. The services are the system applications listed in the Service Control List

Access Control Mode: Disable Enable

IP Address Remove

Add Remove

Enter the IP address of the management station permitted to access the local management services. When you are finished, click the **Save/Apply** button.

Access Control – Passwords

This window allows you to change the password on the Router. When you are finished, click the **Save/Apply** button.

Access Control

Enter the IP address of the management station permitted to access the local management services, and click 'Save/Apply.'

IP Address:

Access Control -- Passwords

Access to your DSL router is controlled through three user accounts: admin, support, and user.

The user name "admin" has unrestricted access to change and view configuration of your DSL Router.

The user name "support" is used to allow an ISP technician to access your DSL Router for maintenance and to run diagnostics.

The user name "user" can access the DSL Router, view configuration settings and statistics, as well as, update the router's software.

Use the fields below to enter up to 16 characters and click "Apply" to change or create passwords. Note: Password cannot contain a space.

Username:

Old Password:

New Password:

Confirm Password:

Update Software

To access the **Tools - Update Software** window, click the **Update Software** button in the **Management** directory. This window allows you to update the Router's software.

Tools -- Update Software

Step 1: Obtain an updated software image file from your ISP.

Step 2: Enter the path to the image file location in the box below or click the "Browse" button to locate the image file.

Step 3: Click the "Update Software" button once to upload the new image file.

NOTE: The update process takes about 2 minutes to complete, and your DSL Router will reboot.

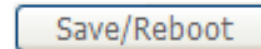
Software File Name:

Save/Reboot

To access this window, click the **Save/Reboot** button in the **Management** directory.

To save your settings and reboot the system, click the **Save/Reboot** button.

Click the button below to save and reboot the router.

A rectangular button with rounded corners, a light gray background, and a thin blue border. The text "Save/Reboot" is centered on the button in a dark gray font.

Troubleshooting

This chapter provides solutions to problems that might occur during the installation and operation of the DSL-2500U. Read the following descriptions if you are having problems. (The examples below are illustrated in Windows® XP. If you have a different operating system, the screenshots on your computer will look similar to the following examples.)

1. How do I configure my DSL-2500U Router without the CD-ROM?

- Connect your PC to the Router using an Ethernet cable.
- Open a web browser and enter the address `http://192.168.1.1`
- The default username is 'admin' and the default password is 'admin'.
- If you have changed the password and cannot remember it, you will need to reset the Router to the factory default setting (see question 2), which will set the password back to 'admin'.

Note: Please refer to next section **Network Basics** to check your PC's IP configuration if you can't see the login window.

2. How do I reset my Router to the factory default settings?

- Ensure the Router is powered on.
- Press and hold the reset button on the back of the device for approximately 5 to 8 seconds.
- This process would take about 1~2 minutes to complete.

Note: Resetting the Router to the factory default settings will erase the current configuration settings. To reconfigure your settings, log into the Router as outlined in question 1, then run the Quick Setup wizard.

3. What can I do if my Router is not working correctly?

There are a few quick steps you can take to try and resolve any issues:

- Follow the directions in question 2 to reset the Router.
- Check that all the cables are firmly connected at both ends.
- Check the LEDs on the front of the Router. The Power indicator should be on, the Status indicator should flash, and the DSL and LAN indicators should be on as well.

- Please ensure that the settings in the Web-based configuration manager, e.g. ISP username and password etc., are the same as the settings provided by your ISP.

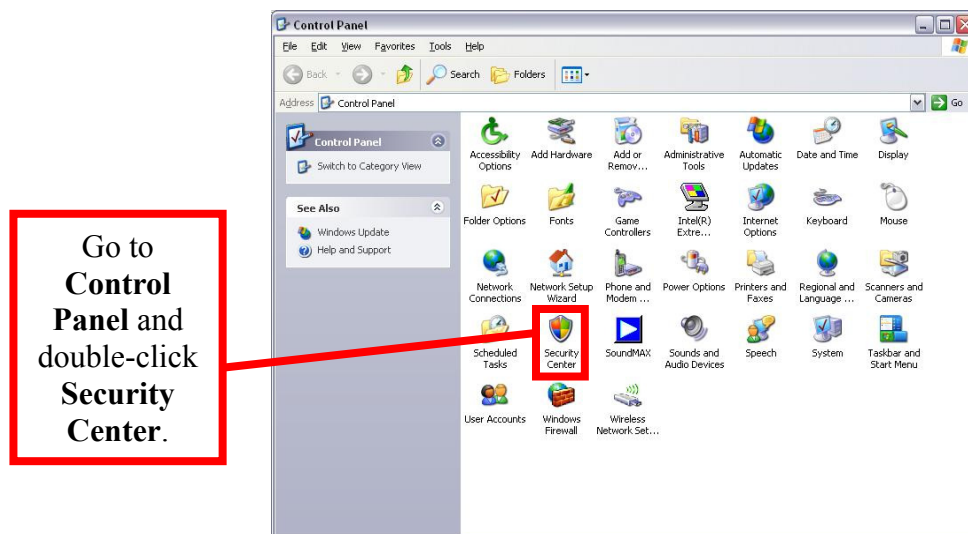
4. Why can't I get an Internet connection?

For ADSL subscribers, please contact your ISP to make sure the ADSL service has been enabled, and your ISP username and password are correct.

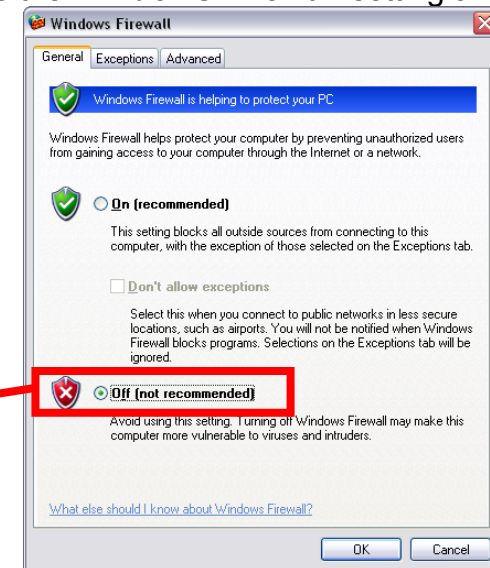
5. What can I do if my router can't be detected by running installation CD?

- Ensure the Router is powered on.
- Check that all the cables are firmly connected at both ends and all LEDs work correctly.
- Ensure only one network interface card on your PC is activated.
- Disable Windows Firewall

In Windows XP, click **Start > Control Panel** and then double-click **Security Center**. Disable the **Windows Firewall** setting and click **OK**.



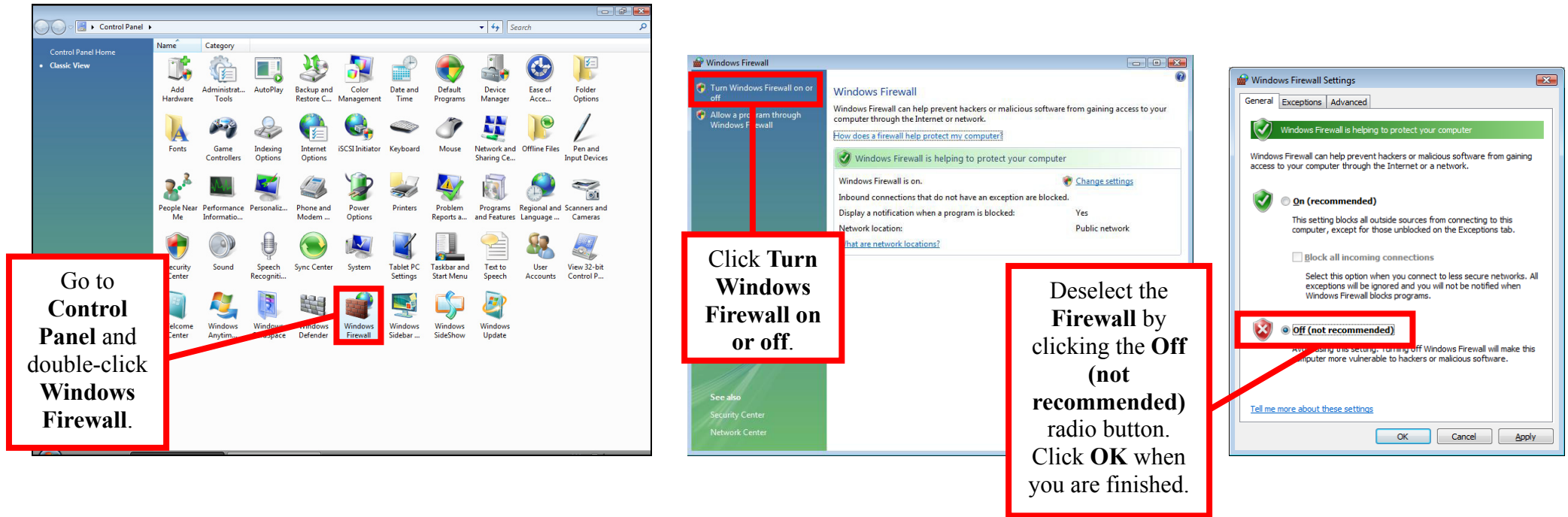
Deselect the Firewall by clicking the Off (not recommended) radio button. Click OK when you are finished.



Note: There might be a potential security issue if you disable the Firewall setting on your PC. Please remember to turn it back on once you have finished the

installation procedure and successfully installed your router.

In Windows Vista, click **Start > Control Panel** and then double-click **Windows Firewall**. Next, click **Turn Windows Firewall on or off**. Choose **Off(not recommended)**. Finally, click **Apply** and then click “**OK**” to complete disabling the Windows Firewall.



Note: There might be a potential security issue if you disable the Firewall setting on your PC. Please remember to turn it back on once you have finished the installation procedure and successfully installed your router.

Networking Basics

Check Your IP Address

After you install your new D-Link adapter, by default, the TCP/IP settings should be set to obtain an IP address from a DHCP server (i.e. wireless router) automatically. To verify your IP address, please follow the steps below.

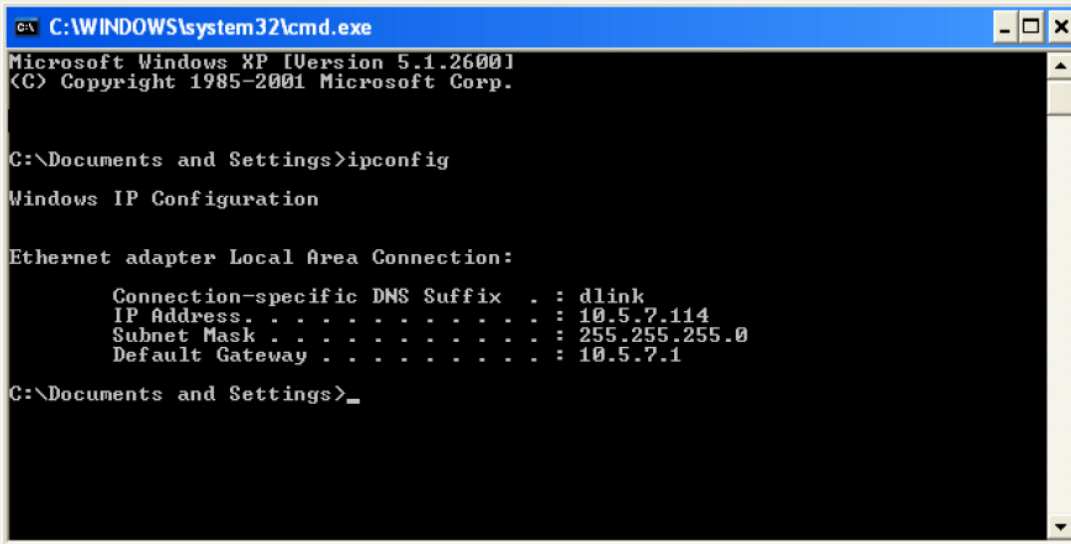
Click **Start > Run**. In the run box type “*cmd*” and click **OK**.

At the prompt, type “*ipconfig*” and press **Enter**.

This will display the IP address, subnet mask, and the default gateway of your adapter.

If the address is 0.0.0.0, check your adapter installation, security settings, and the settings on your router. Some firewall software programs may block a DHCP request on newly installed adapters.

If you are connecting to a wireless network at a hotspot (e.g. hotel, coffee shop, airport), please contact an employee or administrator to verify their wireless network settings.



```
C:\WINDOWS\system32\cmd.exe
Microsoft Windows XP [Version 5.1.2600]
(C) Copyright 1985-2001 Microsoft Corp.

C:\Documents and Settings>ipconfig

Windows IP Configuration

Ethernet adapter Local Area Connection:

    Connection-specific DNS Suffix  . : dlink
    IP Address. . . . .               : 10.5.7.114
    Subnet Mask . . . . .            : 255.255.255.0
    Default Gateway . . . . .        : 10.5.7.1

C:\Documents and Settings>_
```

Statically Assign An IP Address

If you are not using a DHCP capable gateway/router, or you need to assign a static IP address, please follow the steps below:

Step 1

Windows® XP - Click **Start > Control Panel > Network Connections**.

Windows® 2000 - From the desktop, right-click **My Network Places > Properties**.

Step 2

Right-click the **Local Area Connection** that represents your D-Link network adapter and select **Properties**.

Step 3

Highlight **Internet Protocol (TCP/IP)** and click **Properties**.

Step 4

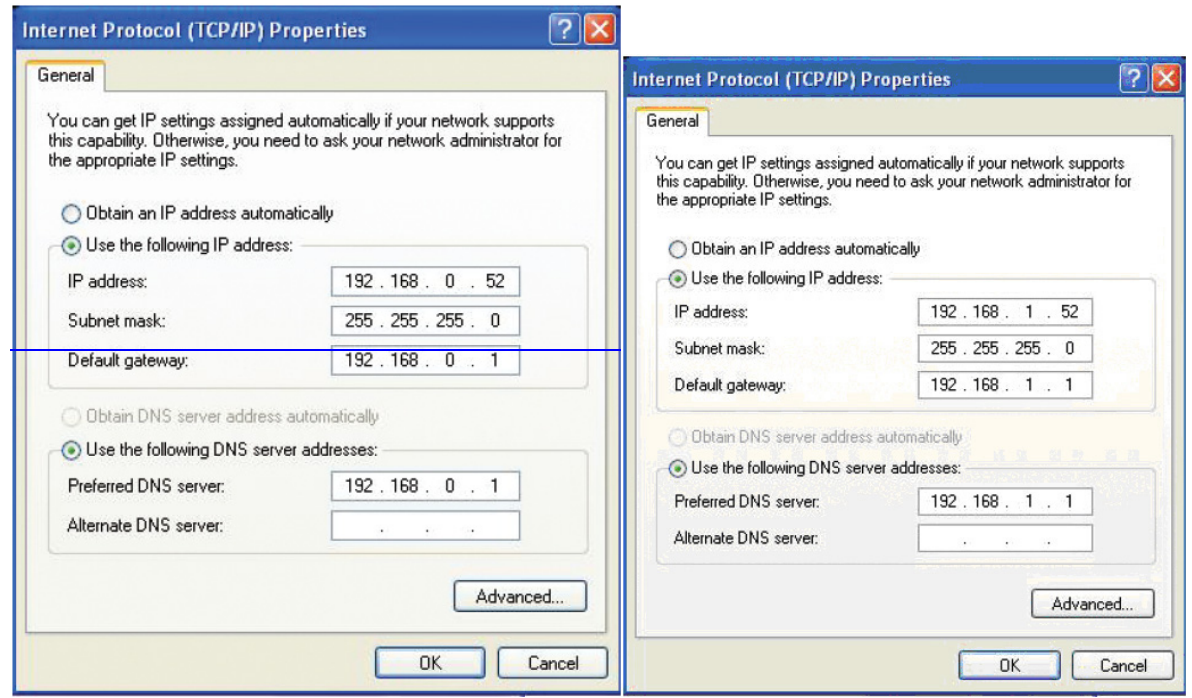
Click on the **Use the following IP address** and enter an IP address that is on the same subnet as your network or the LAN IP address on your router.

Example: If the router's LAN IP address is 192.168.1.1, make your IP address 192.168.1.X where X is a number between 2 and 99. Make sure that the number you choose is not in use on the network. Set Default Gateway the same as the LAN IP address of your router (192.168.1.1).

Set Primary DNS the same as the LAN IP address of your router (192.168.1.1). The Secondary DNS is not needed or you may enter a DNS server from your ISP.

Step 5

Click on the **OK** twice to save your settings.



Technical Specifications

ADSL Standards

- ANSI T1.413 Issue 2
- ITU G.992.1 (G.dmt) Annex A
- ITU G.992.2 (G.lite) Annex A
- ITU G.994.1 (G.hs)
- ITU G.992.5 Annex A

ADSL2 Standards

- ITU G.992.3 (G.dmt.bis) Annex A
- ITU G.992.4 (G.lite.bis) Annex A

Protocols

- IEEE 802.1d Spanning Tree
- TCP/UDP
- ARP
- RARP
- ICMP
- RFC1058 RIP v1
- RFC1213 SNMP v1 & v2c
- RFC1334 PAP
- RFC1389 RIP v2
- RFC1577 Classical IP over ATM
- RFC1483/2684 Multiprotocol Encapsulation over ATM Adaptation Layer 5 (AAL5)
- RFC1661 Point to Point Protocol
- RFC1994 CHAP
- RFC2131 DHCP Client / DHCP Server
- RFC2364 PPP over ATM
- RFC2516 PPP over Ethernet

Data Transfer Rate

- G.dmt full rate downstream: up to 8 Mbps / upstream: up to 1 Mbps
- G.lite: ADSL downstream up to 1.5 Mbps / upstream up to 512 Kbps
- G.dmt.bis full rate downstream: up to 12 Mbps / upstream: up to 12 Mbps
- ADSL full rate downstream: up to 24 Mbps / upstream: up to 1 Mbps

Media Interface

- ADSL interface: RJ-11 connector for connection to 24/26 AWG twisted pair telephone line
- LAN interface: RJ-45 port for 10/100BASE-T Ethernet connection

