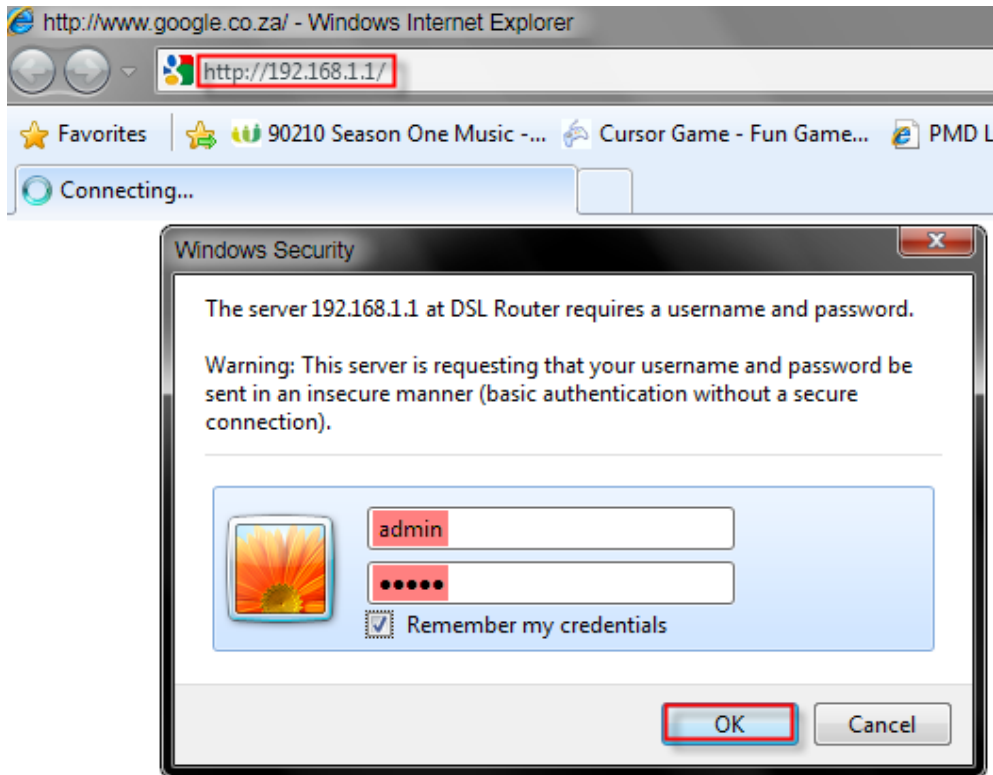


How to set up port forwarding on your DSL-2500U/2540U/2640U for C.O.D Modern Warfare 2

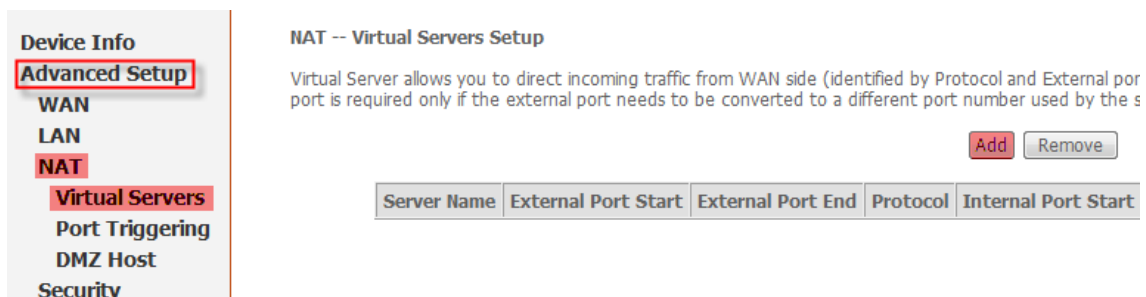
1. Log onto your router by typing the routers IP address (192.168.1.1) into Internet Explorer and using admin as the username and password and click OK.



2. Set up your username and password first under Advanced setup → WAN. Use the following settings and leave the rest on default.

VPI = 8, click next
Connection type = PPP over Ethernet, click next
Enter PPP username and password, click next
Enable NAT = true
Enable Firewall = true
Enable WAN service = true, click next
Save, save and reboot.

3. Now go to Advanced setup → NAT → Virtual servers → Add.



4. Enter the following ports as suggested by Steam. Link [here](#).

Server Name:
 Select a Service: Select One ▼
 Custom Server:
 Server IP Address: ← Your PC's IP address

Save/Apply
 save and apply when done.

External Port Start	External Port End	Protocol	Internal Port Start	Internal Port End	Remote Ip
27000	27015	UDP	27000	27015	
27015	27030	UDP	27015	27030	
27014	27050	TCP	27014	27050	
		TCP			
		TCP			

5. Now it should look like this when done.

NAT -- Virtual Servers Setup

Virtual Server allows you to direct incoming traffic from WAN side (identified by Protocol and External port) to the Internal server with private IP address on the LAN side. The Internal port is required only if the external port needs to be converted to a different port number used by the server on the LAN side. A maximum 32 entries can be configured.

Server Name	External Port Start	External Port End	Protocol	Internal Port Start	Internal Port End	Server IP Address	Remote Host	Remove
ModernWarfare2	27000	27015	UDP	27000	27015	192.168.1.2		<input type="checkbox"/>
ModernWarfare2	27015	27030	UDP	27015	27030	192.168.1.2		<input type="checkbox"/>
ModernWarfare2	27014	27050	TCP	27014	27050	192.168.1.2		<input type="checkbox"/>

6. Remember to save and reboot.

- Device Info
- Advanced Setup
- Diagnostics
- Management**
- Settings
- System Log
- TR-069 Client
- Internet Time
- Access Control
- Update Software
- Save/Reboot**

Click the button below to save and reboot the router.